

2024 Leadership Conference Bios

Bio

Ashaunta Anderson, MD

Pediatrician, Keck School of Medicine at the University of Southern California

- Ashaunta is an Assistant Professor of Pediatrics at the Keck School of Medicine at the University of Southern California and Children's Hospital Los Angeles. Her current research explores the origins of health disparities in the social environments of early childhood, with a particular focus on the impact of early school readiness and racial socialization on later academic achievement and related health outcomes.
- She has conducted a number of qualitative assessments of early childhood educators, pediatricians and minority parents with the goal of developing a culturally appropriate way to enhance a child's education, health, and resilience in a multi-ethnic society.
- AB, Human Biology, Stanford University (2001); MD, Harvard Medical School (2007); MPH, Family & Community Health, Harvard T.H. Chan School of Public Health (2011); & MS, Health Services, UCLA Fielding School of Public Health (2012).



Johnnetta Anderson

Chief of Staff, Reach Out and Read

- As Chief of Staff, Johnnetta leads cross departmental initiatives and coordinates work as a member of the senior leadership team. A primary focus is leadership of the DEI work aimed at growing the knowledge and competency of staff and advancing equitable and inclusive policies and practices across its network.
- She brings nearly 15 years of experience working with nonprofits that provide services to underserved communities. Most recently, she worked with the CDC Foundation on the Vaccine/Workforce initiative project team and with Goodwill Industries.
- She is a board member with her local Red Cross chapter and a past president of her Rotary Club.
- BA, Georgia College and State University; MFA, University of Arizona; & MBA, Mercer University.



Claudia Aristy

Board Member

- Claudia has been the Director of Bellevue's Reach Out and Read program and The HELP Project since 2013. She began at Bellevue in 2000 as a bilingual Parent Educator in both programs and was instrumental in developing all aspects of HELP, for training bilingual HELP volunteers, and for translating and field-testing Spanish language materials.
- She is on the Advisory Board of Leyendo Juntos, a National Reach Out and Read Initiative, as well as on the Advisory Board of Reach Out and Read of Greater New York.
- BA, Hunter College.



2024 Leadership Conference Bios

Laura Bailet, PhD ***Vice Chair & Board Member***

- Laura is the retired Chief Academic Officer for Kaplan Early Learning Company. She is a licensed school psychologist with expertise in early childhood development, literacy and learning disorders.
- Prior to her position at Kaplan, she worked at Nemours Children's Health System for 30 years, where she fulfilled clinical, research, leadership and community outreach roles. She also created the Nemours BrightStart! Program to promote reading success for all children.
- She has won multiple community awards and is a member of the Library of Congress Literacy Awards board.
- BA, English, Wake Forest University (1979) & MA/PhD, Communicative Disorders, Northwestern University (1985).



Tyson Barker, PhD ***Chief Science & Innovation Officer, Institute for Child Success***

- The Institute for Child Success (ICS) partners with governments, communities, foundations, nonprofit organizations and programs seeking to improve outcomes for young children and families. It works on measurement & evaluation, policy research & advocacy, professional empowerment & learning, strategic finance planning, and systems change.
- Tyson directs ICS's science and innovation strategy by developing innovative tools and strategic initiatives that scale the impact of early childhood programs and policies. He also consults with government, nonprofits and foundations around measurement and evaluation.
- He developed the IMPACT Measures Tool, an innovative website that allows users to easily find valid early childhood measures that will work for their community and context.
- BA, Psychology, University of California, Davis; MA, Special Education & Risk Studies, University of California, Santa Barbara; & PhD, Human Development, University of Maryland.



Emily Bartels ***State Director, South Carolina, Reach Out and Read Carolinas/VA/DC***

- Emily has been with Reach Out and Read since 2006, starting as a Program Specialist and then a Program Manager. She is now the State Director of the program in South Carolina, leading its team in state-based work and collaborating with regional partners in North Carolina, Virginia and Washington, DC.
- A native of South Carolina, she serves in various volunteer capacities in her community through the Baby Read Advisory Board, church and local schools.
- BA, Business Administration & Management, College of Charleston (2000).



2024 Leadership Conference Bios

Katherine Beckmann, PhD, MPH

Children & Families Program Officer, David and Lucile Packard Foundation

- The David and Lucile Packard Foundation works with people and communities to create enduring solutions for just societies and a healthy, resilient natural world.
- Katherine leads efforts to protect and advance U.S. policies and systems that support the health, well-being, early learning and economic opportunity of young children and their families. She is particularly interested in the intersection of child development, disease prevention and health promotion to better prepare young children for lifelong education.
- Prior roles include the Senior Policy Advisor for Early Childhood Health in the Administration for Children and Families at the U.S. Department of Health and Human Services where she coordinated, integrated and implemented early childhood health and development policies and initiatives across Head Start, child care, Race to the Top Early Learning Challenge, and Maternal, Infant, and Early Childhood Home Visiting programs.
- BA, Psychology, Washington University in St. Louis (1999); MPH, Health Policy, Yale School of Public Health (2003); PhD, Development and Child Psychology, Columbia University (2012).



Artavia B. Berry

Executive Director, Reach Out and Read Bay Area

- Artavia is a native of Chicago and a respected, inspirational and visionary leader in the nonprofit sector. She has led local, national and global initiatives to increase access to opportunities for our most vulnerable community members.
- She was trained under the tutelage of Michelle Obama in community development at Public Allies Chicago. She is an ordained minister and has also served alongside several valued ministers to create faith-based social changes, with a special focus on youth empowerment.
- She co-founded a school in West Africa as well as two tech startups. She is Chair of the Hayward Community Service Commission, where she helps allocate funding for critical community services and helps to share public policy related to racial equity and healing, reimagining policing, homelessness and culturally relevant education.
- BA, Sociology, Loyola University Chicago & MDiv, Grace Christian Seminary.



Carrie Bersak

Program Officer, The Burke Foundation

- The Burke Foundation invests in transformative early childhood initiatives to build a cycle of opportunity across generations in New Jersey.
- Carrie has nearly two decades of experience working in the nonprofit sector and has a depth of knowledge about public benefits and income support programs, as well as housing law, family law, disability rights and advance planning. She is also a frequent speaker on the intersection of legal, social and health issues.
- She spent 14 years as a public interest attorney, including as Director of Legal Services for The Family Center in New York City, where she worked with under-resourced families impacted by serious illness or disability. She has also worked as a research assistant in healthcare studies as well as a Litigation Associate at Day Pitney LLP.
- BA, Community Health, Public Policy & American Institutions, Brown University (2005) & JD, New York University School of Law (2009).



2024 Leadership Conference Bios

Lisa Blair

Executive Director, Reach Out and Read Florida

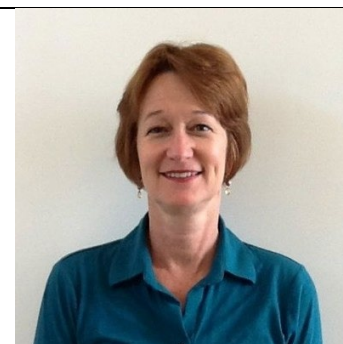
- Lisa is the President of the Family Learning Partnership, a Reach Out and Read Affiliate. Her tenure has been marked by the successful establishment of impactful partnerships within the public, private and faith-based communities, optimizing service effectiveness and provision efficiency.
- She has served as Project Director for a national early literacy research initiative with Abt Associates, overseeing the evaluation of language and literacy interventions in 162 childcare centers in Miami-Dade County benefiting low-income families.
- Throughout her career, she has held various prominent leadership positions on local, state and national boards, showcasing her dedication to community development.



Lisa Bohmer

Director of Global Early Childhood Development, Conrad N. Hilton Foundation

- The Conrad N. Hilton Foundation focuses on improving the lives of individuals living in poverty and experiencing disadvantage throughout the world.
- Lisa leads the program that works in concert with government, other funders and grantee partners to improve caregiver well-being and early childhood development outcomes in Kenya, Mozambique, Tanzania and the United States.
- She has more than 30 years of experience with programs, research and grantmaking in the areas of early childhood, HIV and AIDS, maternal and child health, reproductive rights and the empowerment of women and girls. Prior roles have included serving as the Director of Partnerships with the Elizabeth Glaser Pediatric AIDS Foundation, HIV/AIDS Director for UNICEF in Ethiopia, Senior Advisor to the President of the Nike Foundation, Program Director at the Pacific Institute for Women's Health, and Ipas' regional representative for East and Southern Africa.
- She recently served as chair of the Coalition for Children Affected by AIDS, on the Executive Group for the Early Childhood Development Action Network, and on the board of directors for Funders Concerned About AIDS.
- BA, Philosophy, University of Michigan (1985) & MPH, Public Health, University of California, Los Angeles (1994).



Jean-Calvin Booke

Reach Out and Read Graduate



LaMartha Booke

2024 Leadership Conference Bios

Reach Out and Read Graduate

LaMartha Boock was born at Bellevue Hospital in New York City, where, at 17 years old today, she continues to receive routine pediatric care services. As an infant and a toddler, LaMartha and her father, Jean-Calvin Boock, experienced first-hand the Reach Out and Read (ROR) Program at Bellevue Hospital. The program left indelible and invaluable marks in LaMartha's mind as, in her very early age, the ROR program ignited LaMartha's reading and drawing appetite. 17 years later, LaMartha happily and surprisingly realized that the ROR program is still positively impacting children at Bellevue Hospital. It takes a whole Village to raise a well-rounded child. The ROR program is an important part of LaMartha's Village... This coming Fall, LaMartha will be a Freshman at the University of San Diego, CA, majoring in Biomedical Engineering.



Christine Bosco

Administrative Lead, Einhorn Collaborative

- Einhorn Collaborative works with a wide range of cultural influencers, researchers, community leaders and funders to help Americans build stronger relationships, embrace our differences and rediscover our shared humanity – so we can solve our most urgent challenges together.
- Christine manages administration, executive office operations and project support across portfolios with the Einhorn Collaborative team.
- Previous roles include serving as the Executive Assistant at Greenlight Capital and Director of Special Events and Facility Rentals at the Caramoor Center for Music and the Arts in Katonah, NY, a role she held for 14 years.
- BS, Hospitality & Tourism Management, University of Massachusetts Amherst.



Callee Boulware

Regional Executive Director, Reach Out and Read Carolinas/VA/DC

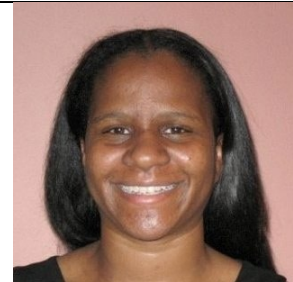
- Callee has served as Executive Director of Reach Out and Read in the Carolina since 2001 and led the team through regionalization with Virginia and Washington, DC.
- She is also a member of Leadership NC Class XXIV, and Advisory Board Member of Capita, and a Riley Institute DLI graduate.
- MA, Mass Communications, University of South Carolina (2003) & MBA, University of South Carolina Moore School of Business (2007).



2024 Leadership Conference Bios

Renee Boynton Jarrett, MD, ScD *Founding Director, Vital Villages*

- Vital Villages is a network of residents and organizations committed to maximizing child, family and community well-being. Its community engagement network mobilizes collective investment from residents, community organizations and institutions to seed scalable and sustainable community change around child protection and promoting healthy social and emotional development in early childhood.
- Renee is the Founding Director of the organization as well as a practicing primary care pediatrician at Boston Medical Center. A social epidemiologist, her scholarly interests focus on the role of early-life adversities as life course social determinants of health, as well as the intersection of community violence, intimate partner violence, and child abuse and neglect and neighborhood characteristics that influence these patterns.
- She also currently works as an Associate Professor of Pediatrics at Boston University School of Medicine, which she joined in 2007.
- AB, Cultural Anthropology, Princeton University; MD, Yale School of Medicine; & ScD, Social Epidemiology, Harvard School of Public Health.



Kimberly Bradley *Director, Pediatrics Supporting Parents Program*

- Pediatrics Supporting Parents presents a nearly universal access point for pediatricians and parents to partner in promoting and supporting young children's social and emotional well-being and nurturing parent-child relationships. It seeks to transform pediatric well-child visits to strengthen early relational health and create lasting change that helps children succeed.
- Kimberly has been the Lead Senior Technical Assistance Specialist of the Zero to Three program with the National Center for Infants, Toddlers and Families for the past 11 years. She is also a director of Pediatrics Supporting Parents. In her role, she focuses on Tribal Home Visiting programs as they implement federal grants that seek to improve birth outcomes, reduce child abuse and neglect, and enhance early childhood systems of care.
- Previously, she directed health programs for the Health Council of Southeast Florida and served as a Project Director/Contract Manager of the Children's Services Council in Boynton Beach, FL.
- BS, Psychology, Longwood University (1999); MPH, Virginia Commonwealth University (2001); & Master of Nonprofit Management, Florida Atlantic University (2008).



Eliot Brenner *Executive Director, Esther A. and Joseph Klingenstein Fund*

- For four decades, the Esther A. and Joseph Klingenstein Fund has supported early career scientists engaged in basic or clinical neuroscience research. It has also been engaged in the training of independent schoolteachers and leaders and, in recent years, has added a program in early childhood that focuses on making systemic changes in childcare and early childhood mental health.
- Eliot is a nonprofit executive with 20 years of experience leading behavioral health, child welfare and health care organizations. He has also owned a private psychotherapy and counseling practice in Fairfield, CT for the past 27 years.
- Prior roles have included serving as the President & CEO of the Child Guidance Center of Southern Connecticut, a Program Director of the Leona M. and Harry B. Helmsley Charitable Trust, where he focused on Type 1 Diabetes, and 11 years with the Annie E. Casey Foundation, serving first as the Director of Clinical Services and then as the Deputy Executive Director of Operations for Casey Family Services.
- He serves on the advisory boards of the Children's Mental Health Network and the Praesidium National Advisory Council and was formerly on the board of the Southwest Community Health Center.



2024 Leadership Conference Bios

- BA, Psychology, University of Chicago & PhD, Clinical Psychology, Yale University.

Lori Brooks

Senior Director of External Affairs, Reach Out and Read

- In her role as National Senior Director of External Affairs, Lori helps to shape the direction of Reach Out and Read by driving public awareness, brand visibility and overall communications strategies. She leads strategy and implementation in public relations, communications and branding, national partnership management and development, and supporting Affiliates' marketing, branding and communications efforts.
- She is an experienced leader in strategic communications, marketing and nonprofit management with deep expertise in crisis communications, brand management and media relations. Most recently, she served as the Senior Director of Communications and Marketing for Oklahoma Contemporary, and she has also worked with The Albuquerque Tribune, the Seattle Times, the University of Oklahoma and the College Media Association.
- BA, News Communications, University of Oklahoma (1996).



Deborah Brown

Chief of External Affairs, NYC Health & Hospitals

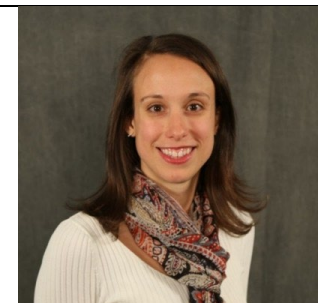
- NYC Health & Hospitals is the largest municipal health care system in the US.
- Deborah has been in this role for the past five years. She guides the system's external partnerships and manages complex regulatory and policy matters.
- Previously, she was with the NYC Office of the Mayor serving as the Chief Strategy and Innovation Officer of Health, as the Vice President of External Affairs at Montefiore Health System, and as a Senior Vice President of Legal, Regulatory, and Professional Affairs and General Counsel of the Greater New York Hospital Association.
- A trained attorney, she worked as a trial attorney for the U.S. Department of Justice and as an Associate with Manatt, Phelps & Phillips, LLP in New York City, both for two years.
- She is a board member of Riverside Park Conservancy and serves on the Council of Advisors for the Association to Benefit Children. In the past, she has been an Executive Board Member at the University of Pennsylvania: The Penn Fund and as the Community Service Committee Co-Chair at The Brearley School. She has also been an active alumni volunteer with both her high school and her undergraduate alma maters.
- BA, English & Psychology, University of Pennsylvania; MSW, Columbia University; & JD, Columbia Law School.



Jessica Bushar, MPH

Director of Research and Evaluation, HealthySteps

- HealthySteps is an evidence-based, interdisciplinary pediatric primary care program that promotes the health, well-being and school readiness of babies and toddlers, with an emphasis on families living in low-income communities.
- Jessica is responsible for providing research and evaluation expertise to inform the HealthySteps programmatic strategy, and leading and overseeing the implementation of a strategic plan for all research and evaluation activities.
- Her former roles include leading efforts to expand the evidence base of Text4baby, a mobile health service with the National Healthy Mothers, Healthy Babies Coalition that was designed to promote maternal and child health, and working at NORC at the



2024 Leadership Conference Bios

University of Chicago where she served in managing and supporting roles for many public health and health services research and evaluation projects.

- BS, Psychology, Pennsylvania State University (2005) & MPH, Maternal Child Health Epidemiology, University of Illinois at Chicago (2010).

Kim Byam

Regional Executive Director, Reach Out and Read New Jersey/Delaware

- Kim has been the Executive Director of the New Jersey affiliate since 2009.
- She has extensive and varied experience in the nonprofit sector, having previously served as the Director of the Annual Fund for Rutgers Cancer Institute of New Jersey and Assistant Director of Development for Project Bread, an anti-hunger organization located in Boston.
- BA, Communications, American University.



Pam Cantor, MD

Child Psychiatrist, Author & Speaker

- Pam is a child and adolescent psychiatrist, author and thought leader on human potential, the science of learning and development, and educational equity.
- In the aftermath of 9/11, she founded Turnaround for Children, which translates scientific insights into tools and services that help educators establish the conditions for all students to thrive.
- She has published two books: Whole-Child Development, Learning & Thriving: A Dynamic Systems Approach and The Sciences of Learning and Development. In these books, she crystallizes key scientific concepts about how human potential and learning unfold so that anyone seeking to open pathways for learning and opportunity for young people can do so.
- She is a governing Partner of the Science of Learning and Development Alliance, member of the Brookings Institution's Task Force on Next Generation Community Schools, and a Commissioner of the Learning 2025 Commission of the American Association of School Superintendents. She has also served as a Visiting Scholar at the Harvard Graduate School of Education.
- BA, Sarah Lawrence College (1971) & MD, Cornell University (1981).



Yadira Caraveo, MD

Congresswoman

- The daughter of working-class Mexican immigrants, Yadira is the first representative of Colorado's new 8th Congressional district and Colorado's first Latina federal representative. While in office, she aims to lower costs for families, improve healthcare access, and ensure every child in Colorado has the opportunities they deserve.
- She serves on the House Agriculture Committee, serving as Ranking Member on the Subcommittee on Commodity Markets, Digital Assets and Rural Development, and serves on the House Committee on Science, Space and Technology.
- Her board roles include Anythink Libraries, the Behavioral Health Transformation Council, the Committee of Interns and Residents at SEIU Healthcare, and Early Childhood Partnership of Adams County.
- She completed a pediatric internship and residency at the University of New Mexico.
- BA, Biology, Regis University (2003) & MD, University of Colorado Health Sciences Center (2009).



2024 Leadership Conference Bios

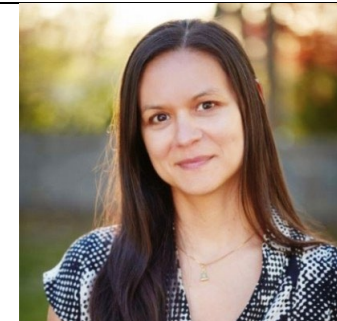
Dominique Charlot-Swilley, PhD *Assistant Professor, Georgetown University*

- Dominique is an Assistant Professor of Senior Research Policy at the Center for Child & Human Development in the Department of Pediatrics at the Georgetown University School of Medicine, as well as the Director of Provider Wellbeing for the Early Childhood Innovation Network.
- She was the lead psychologist for the implementation of HealthySteps in Washington, DC at Children's Medical Center and now serves as the organization's Technical Assistant Specialist.
- She is the Co-Developer of CPR, Compassion, Practice, Relationship & Restoration, a well-being program designed for pediatric and early childhood providers to help address compassion fatigue, burnout and vicarious trauma. She is also a co-principal investigator of the Substance Abuse and Mental Health Services Administration's Early Childhood Mental Health Awareness Training grant which aims to increase the capacity of early childhood educators to recognize and appropriately respond to the social emotional health of young children.
- Prior to these roles, she taught at The Johns Hopkins University, Howard University, George Washington University and Montgomery College.
- MS & PhD, Clinical Child Psychology, Howard University.



Perri Chinalai *Managing Director of Partnerships, Too Small to Fail (Clinton Foundation)*

- The Clinton Foundation's Too Small to Fail program surrounds families with early language and learning opportunities, and supports parents and caregivers with resources to talk, read and sing with young children from birth to help prepare them for success in kindergarten and beyond.
- Perri oversees the support and scaling of Too Small to Fail's "Talking is Teaching: Talk, Read, Sing" campaigns and directs the initiative's programming focused on providing parents and caregivers with information about children's early brain and language development.
- Her prior roles include serving as the Managing Director of Program Innovation and Strategy at StoryCorps, where she designed and implemented initiatives focused on serving diverse communities with cultural humility and empathy.
- BFA, Photography, Rhode Island School of Design (2000) & MA, Media Studies, The New School (2007).



Nathan Chomilo, MD *Board Member & Former Director, Reach Out & Read Minnesota*

- Nathan is the Medical Director for the State of Minnesota's Medicaid & MinnesotaCare programs and practices as a general pediatrician and an internal medicine hospitalist with Park Nicollet Health Services/HealthPartners. His advocacy work has included the impact early childhood intervention and healthcare access have on the long-term prospects of our children and how physicians and health systems can address racial & health equity. He is also an adjunct professor at the University of Minnesota.
- He is a member of the AAP's Council on Early Childhood and the Section on Minority Health, Equity & Inclusion, Board Member at the Minnesota Chapter of the AAP, Board Member of the Institute for Clinical Systems Improvement, and the Steering Committee of the Minnesota Perinatal Quality Collaborative. He is also a member of the Committee on Improving the Health & Wellbeing of Children & Youth through Health Care with The National Academies of Sciences, Engineering & Medicine.
- BS, Zoology, Miami University (2005) & MD, University of Minnesota (2009).



2024 Leadership Conference Bios

Alex Chu

Executive Director of the Northeast, Reach Out and Read

- In his current role, Alex's priority is to enhance the educational and social impact of Reach Out and Read programs for a diverse client base in the Northeast.
- He has more than 20 years of experience across the nonprofit human services and education sectors, where he has led efforts to support behavioral health providers in profitability and market positioning, advised organizations on revenue enhancements and philanthropic support, and conducted reviews of data systems and capacity building opportunities.
- Earlier in his career, he worked for Public Consulting Group, Thompson Island Outward Bound and the YMCA.
- He serves on the boards of multiple nonprofit and public agencies including as Chair of the Board for the Boston Green Academy 6-12 Horace Mann Charter School, and as Secretary for Camp Starfish, a summer camp for youth with development disabilities.
- BA, English, Philosophy & Environmental Science, Boston College; ALM, Psychology, Harvard University; & MBA, Public and Nonprofit Management, Boston University.



Pamela Chung, MD

Medical Director, Reach Out and Read Texas

- Pamela is a family medicine practitioner and the Medical Director for Reach Out and Read Texas. She is also the Associate Program Director of the Memorial Family Medicine Residency Program and the Social Media Co-Lead for Those Nerdy Girls, an online forum that aims to help its readers make better health decisions by providing practical and factual health information.
- She previously spent several years providing healthcare in rural communities.
- BS, Health Sciences, McMaster University (2004) & MD, McMaster University (2007).



Donna Cohen Ross

Policy Advisor, Reach Out and Read

- Donna Cohen Ross is an independent advisor to government agencies, nonprofit organizations and private foundations, specializing in the design and implementation of policies that make public programs work better for children and families.
- Her most recent efforts have leveraged her deep expertise in Medicaid and CHIP policy and financing to sharpen the focus of pediatric primary care on social and emotional development, leading to innovative investments in early literacy promotion, preventive behavioral health services, and the development of the future healthcare workforce.
- She has also served as a Senior Policy Advisor and Director of Enrollment Initiatives in the Center for Medicaid and CHIP Services at the US Department of Health and Human Services and directed the outreach division at the Center on Budget and Policy Priorities.
- She is a graduate of Cornell University.



2024 Leadership Conference Bios

Ruth Coleman, PhD

Senior Director of Growth, Reach Out and Read National

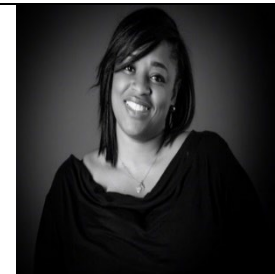
- Ruth has more than two decades of experience in nonprofit work and 13 years as an organizational consultant. She specializes in optimizing organizational performance through tailored growth strategies, emphasizing collaboration, communication, and leadership, always underscored by a commitment to equity and inclusion. She immigrated to the United States from Nigeria, West Africa at the age of nine, igniting her unwavering commitment to marginalized communities.
- She has also co-founded a nonprofit dedicated to addressing the surgical crisis in Africa. Her diverse experiences and expertise have positioned her to do work at the intersection of education and healthcare, creating opportunities to accelerate the progress of those impacted.
- BSW, Social Work & BS, Bible Studies; MA, Organizational Leadership; & PhD, Organizational Leadership.



Sharon Corbin

Executive Assistant & Manager of Special Projects, Scholastic

- Sharon has been with Scholastic for the past 23 years and has served as an Executive Assistant and Manager of Special Projects for the past 12 years.
- She also manages the Voices Book Club catalog at Scholastic Book Clubs.



Amy Crosby

Statewide Coordinator of Alabama, Reach Out and Read

- Amy has been the Statewide Coordinator for Alabama since 2020.
- For the past 15 years, she has worked with children and families in a variety of settings including federal and state prisons, public and private schools, childcare centers and nonprofits. She has previously held roles with the West Alabama Food Bank and Networks of Opportunity for Child Wellbeing with the Vital Village Network.
- BS, Human Development & Family Studies, University of Alabama (2009) & MS Coursework in Human Development & Family Studies, University of Alabama (2011).



2024 Leadership Conference Bios

Elizabeth Dawson, MD

Pediatrician & AL-AAP Quality Improvement Chair, Secretary & Treasurer

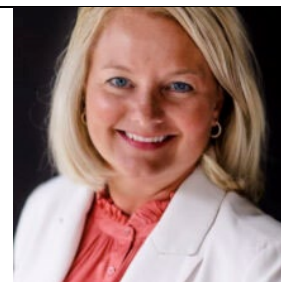
- Elizabeth is a pediatrician with Dothan Pediatric Health Care Network and practices at Troy Pediatric Clinic and Collegiate Health. She is also the current Alabama Chapter-AAP Quality Improvement Chair. Previously, she was the former Chief of Pediatrics at Troy Regional Medical Center and Medical Director of Charles Henderson Child Health Center.
- In 2019, she founded Troy Resilience Project, a nonprofit organization created to address the toxic stress of childhood and to build resilience through safe, stable nurturing relationships. The Project joined Alabama Network of Family Resource Centers in 2021 and is expanding its work in the Wiregrass.
- BS, Biology, University of the South (1997) & MD, University of Alabama School of Medicine.



Angie DeLost

CEO, Ready for School and Reach Out and Read Michigan

- Angie is the CEO of Ready for School, the Reach Out and Read affiliate in Michigan, a role she has held for just over a year.
- Previously, she was the Vice President of Program Services as well as the Vice President of Rehabilitation & Clinical Services for Easterseals of Central Illinois. She also served that organization as a pediatric occupational therapist for 19 years and has extensive experience providing services to children and families as an occupational therapist in home, medical, school and community settings.
- BS, Occupational Therapy & Psychology, Saint Ambrose University & MS, Health Services Administration, University of Saint Francis.



Tom DeWitt, MD

Board Member

- Tom is the Carl Wehl Professor of Pediatrics, Director of the Division of General and Community Pediatrics, and Associate Chair for Education at Cincinnati Children's Hospital Medical Center. He has pursued innovative and effective approaches to graduate education, including an online Master's in Medical Education program. He is nationally and internationally known for his publications and presentations in the areas of faculty development and community-based education and research.
- His other research interests include medical education and the impact it has on patient care, as well as early reading research as it relates to the development trajectory of literacy in young children and brain correlates of that trajectory.
- He has served as President of the Academic Pediatric Association and Chair of both the American Academy of Pediatrics Steering Committee of Pediatric Research in Office Settings network and the Committee on Pediatric Education.
- MD, University of Rochester (1976).



2024 Leadership Conference Bios

Ruby Dey, MD

Board Member & Chief of Pediatrics, Baltimore Service Area, Kaiser Permanente Mid-Atlantic

- Kaiser Permanente is a medical group with locations nationwide.
- Ruby joined the Mid-Atlantic medical group 15 years ago after finishing her pediatric residency and training. Her spouse also works for the company. She has served in various leadership roles, including as a mentor to the next generation of pediatricians and pediatric leaders, Assistant Chief of Pediatrics, and currently as the Chief of Pediatrics in Baltimore. She oversees the pediatric care provided to Kaiser patients at seven medical centers and three hospitals.
- BA, University of Maryland, College Park; MPH, George Washington University; & MD, Howard University College of Medicine.



Itai Dinour

Executive Director, Carmel Hill Fund

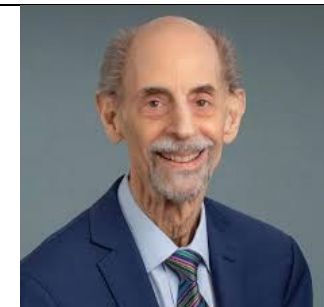
- The Carmel Hill Fund's mission is to promote literacy and foster a love of reading, particularly among at-risk youth in inner cities.
- Itai previously spent almost nine years with the Einhorn Collaborative, working as a Strategy Lead in Bridging, where he focused on providing adolescents with experiences to develop lifelong skills of perspective-taking & bridge-building. He also focused on work in the K-12 social-emotional learning space, and the organization's efforts in higher education, civics education and national service.
- He spent 12 years with City Year in leadership roles including Chief Organizational Advancement & Alumni Officer, Executive Director and Chief of Staff.
- BS, Labor and Industrial Relations, Cornell University (2001) & MBA, NYU Stern School of Business (2010).



Benard Dreyer, MD

Developmental Pediatrician, NYU Bellevue

- Benard is a general and development-behavioral pediatrician and the Director of Pediatrics at NYU Bellevue. He has led this practice, which includes mental and oral health services for children, for more than 30 years. His research has focused on improving early brain development in children through early interventions, studying how to use the principles of health literacy to improve patient safety, and the management of chronic disease. He has also taught at New York University.
- Many of his current patients have autism spectrum disorder, attention deficit hyperactivity disorder, language delays, genetic problems and behavioral difficulties at school.
- He is a former President of the American Academy of Pediatrics and chaired the Academic Pediatric Association Task Force on Childhood Poverty.
- MD, New York University (1970).



2024 Leadership Conference Bios

Dani Dumitriu, MD, PhD

Assistant Professor of Pediatrics, Columbia University

- Dani is trained as a general pediatrician, neuroscientist and pediatric environmental health scientist.
- She joined Columbia University in this role in 2018 and dedicates 80% of her time to basic science research into the neurobiological basis of resilience as the Principal Investigator of the DOOR lab (Developmental Origins of Resilience Lab) at the New York State Psychiatric Institute. The other 20% of her time is spent caring for newborns in the Well-Baby Nursery at the Morgan Stanley Children's Hospital of New York.
- Her work is to understand the neurocircuits of resilience to spearhead novel approaches to primary prevention. There has been unprecedented progress in medicine in the treatment of disease with a lack of parallel advancement in the prevention of disease, particularly during key developmental periods.
- She also serves as the Director of Translational Science of the Nurture Science Program, Co-Chair of the WiSE Club, and Chair of the COVID-19 Mother Baby Outcomes Initiative.
- MD/PhD, Icahn School of Medicine at Mount Sinai.



Marny Dunlap

Medical Director, Reach Out and Read Oklahoma

- Marny has been an Associate Professor of Pediatrics at the University of Oklahoma Health Sciences Center for the past 23 years and is the Medical Director of Reach Out and Read Oklahoma. She is also involved with the Oklahoma University Physicians Latino Clinic.
- She is the Vice President of the Oklahoma Chapter of the American Academy of Pediatrics.
- MD, Pediatrics, University of Oklahoma College of Medicine (1997).



Nicole Eovino Diebold

Program Officer, C.E. and S. Foundation, Inc.

- The C.E. and S. Foundation identifies, funds and nurtures projects and organizations in the fields of Education, Global Competency and the Urban Environment that meaningfully enhance the living conditions or prospects of identifiable people.
- Nicole has worked with the foundation for just over nine years, spending seven of them as a Program Associate.
- She began her career at Greater Louisville Inc., the Metro Chamber of Commerce, with various roles in the workforce, talent attraction and education. As Manager of Education, she led several programs and initiatives that served to better align K-12, postsecondary and the business community to increase education attainment levels.
- Other prior roles include serving as the Assistant Director of the Kentucky Innovation Network with GLI's EnterpriseCorp and the Kentucky Cabinet for Economic Development, where she worked with high-tech entrepreneurial clients on growth strategy, funding efforts and providing access to key partners and providers.
- She serves on the board of the Louisville Youth Philanthropy Council and on the steering committee of the Out-of-School Time Impact Group of Grantmakers for Education.
- BA, Foreign Languages & International Economics, University of Kentucky & MA, Patterson School of Diplomacy and International Commerce at the University of Kentucky.



2024 Leadership Conference Bios

Amy Erickson

Executive Director, Reach Out and Read Georgia

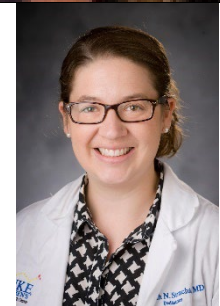
- Amy is the Regional Executive Director for Reach Out and Read Georgia, a role she has held for the past 11 years. She is also a Founding Board Member and the Vice President of the National Charity League of Northeast Atlanta, a non-profit philanthropic mother daughter organization committed to service, leadership development and cultural experiences.
- In the past, she has worked with CompassLearning, Pearson Education and The Family Education Network.
- She is a long-time member of the Junior League and was a founding member of the Northeast Atlanta Chapter of the Young Men's Service League.
- University of Tennessee-Knoxville (1987).



Ellie Erickson, MD

Pediatrician, DukeHealth

- Ellie is a pediatrician with DukeHealth in Durham, NC and is an Assistant Professor of Pediatrics at Duke Medical School.
- She is also the Medical Director of Family Connects, a community-wide nurse home visiting program for all parents of newborns, regardless of income, and was elected to serve as the co-lead for the Carolinas Collaborative, a cohort of academic pediatric residency programs in North and South Carolina dedicated to promoting advocacy education in pediatric residency programs.
- She has an interest in the promotion of early relational health through the lens of early childhood literacy and has worked with a colleague to spearhead the Reach Out and Read program at all of the Duke Children's Primary Care sites. She has served as the Medical Director for Duke's Reach Out and Read program for the past eight years.
- BA, Spanish & Literature, Davidson College (2006) & MD, Wake Forest University School of Medicine (2010).



Danielle Erkoboni, MD

Pediatrician & Associate Medical Director, Reach Out & Read Greater Philadelphia

- Danielle is a pediatrician at the Karabots Primary Care Center, a Children's Hospital of Philadelphia (CHOP) Care Network primary care practice. She is also a Clinical Assistant Professor of Pediatrics at the Perelman School of Medicine at the University of Pennsylvania, and a faculty member at PolicyLab at CHOP.
- She leads efforts to promote early literacy and learning through parent-child interaction and serves as the principal investigator within the Literacy Lab and the Associate Medical Director of Reach Out and Read.
- Through her work with these and other community stakeholders, she has partnered with Temple University's Child and Infant Lab, the Free Library of Philadelphia, and Read by 4th (Philadelphia's grade-level reading campaign). She is also collaborating with many of these organizations to bring playful learning environments to clinics, parks and other community spaces throughout the city of Philadelphia.
- MD, The Chicago Medical School, Rosalind Franklin University of Medicine & Sciences & MSHP, Health Policy & Research, University of Pennsylvania.



2024 Leadership Conference Bios

Betsy Fader

Foundation Consultant, Carmel Hill Fund

- Betsy currently works with clients as a foundation consultant.
- Past positions have included serving as the Vice President of the Surdna Foundation, focused on inclusive economics, sustainable environments and thriving cultures, and as an Advisor for Strategy and New Programs at The Leona M. and Harry B. Helmsley Charitable Trust, where she developed the Program on Biomedical Research Infrastructure.
- She spent 14 years as the Chief Program Officer for the Doris Duke Charitable Foundation, where she created the Foundation's grants programs focusing on child well-being and improved US-Islamic relations, and helped oversee its work in the environment, performing arts and medical research fields.
- BA, Political Science, Vanderbilt University (1985) & MEd, Harvard Graduate School of Education (1997).
- Betsy is an Ironman competitor.



Aimee Falso

Executive Director, Reach Out and Read Rhode Island

- Aimee has served as the Executive Director for Reach Out and Read Rhode Island for the past seven years. In her role, she has led the effort to create specially curated book orders for each of the 70 medical sites they serve and has transformed the way the Rhode Island affiliate works with sites.
- Her passion has always been working with children and families, forging connections that strengthen the community. She has previously worked as a private school teacher and librarian, youth program director with the YMCA, as an early childhood small business owner, outdoor educator, and community center staff member.
- BA, Public & Community Service, Providence College (1999).



Molly Felmet

Reach Out and Read Coordinator, Reach Out and Read Palm Beach

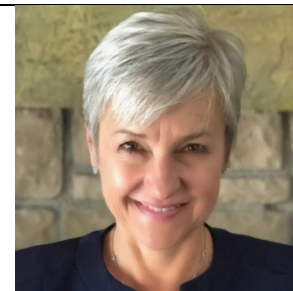
- Molly has been running the Reach Out and Read program for the Literacy Coalition of Palm Beach County since 2009.
- As a child in rural North Carolina, she fell in love with reading as a window to a world she wanted to see. She particularly enjoys curating books for clinics that allow children to see themselves and inspire them to learn more about the world around them.
- BA, Journalism & Mass Communication, University of North Carolina at Chapel Hill & JD, Duke University.

2024 Leadership Conference Bios

Patty Fontneau

CEO, Reach Out and Read Colorado

- Patty has been the CEO for Reach Out and Read Colorado for almost two years and is a senior executive with a track record in the health services, education, legal, technology and finance industries.
- Prior to joining the organization, she developed and served as President of the Benefit Exchange and Technology Solutions health plan business at Cigna. She also served as the CEO of the technology start-up Connect for Health Colorado, where she led the successful development and implementation of Colorado's public health benefit exchange.
- She is an experienced board chair and board member of private, industry and not-for-profit boards.



Morgan Ford

Senior Manager of Research & Product Innovation, Scholastic Literacy Initiatives at Scholastic

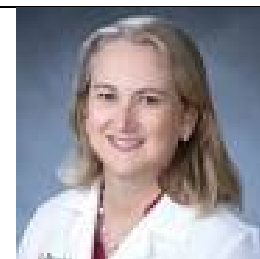
- Morgan has been with Scholastic for ten years and in her current role as Senior Manager of Research and Product Innovation of Literacy Initiatives for the past five. She is passionate about social and civic responsibility, youth empowerment and literacy initiatives and advocacy.
- She previously served as a Family Engagement Coordinator for AmeriCorps VISTA and as a middle school science teacher in Florida.
- MBA, St. Lawrence University (2007) & MA, Sustainable Development & Management, School for International Training (2013).



Lourdes Forster, MD

Medical Director, Reach Out and Read Florida

- Lourdes has been a practicing pediatrician for more than 20 years with Jackson Health System-Miami and Holtz Children's Hospital at UM-Jackson Memorial Medical Center. She is also the Medical Director of Reach Out and Read Florida.
- MD, Tulane University School of Medicine (1993).



Bryn Fortune

Consultant, Fortune Consulting

- Bryn is a parent leader with Reach Out and Read and has been working with various organizations for the past 37 years as a content expert, consultant, facilitator and coach on a variety of national and state organizations and initiatives.
- She is a self-employed consultant and oversees the facilitation and coaching of parent leadership communities of practice that are making a difference every day at the local and state level. She is currently the national parent leadership thought leader and coordinator of the Early Relational Health-Family Network Collaborative and has also served as the Director of Family & Parent Leadership at the Early Childhood Investment Corporation. Her work has helped to create a novel parent group of at least 66 parent leaders that represent all regions of the country as well as key groups that haven't



2024 Leadership Conference Bios

traditionally been heard in family health spaces, including African American families, Indigenous families, Spanish-speaking immigrant families, fatherhood perspectives, families of children with special health needs and disabilities, families receiving home visiting services, and families residing in the rural South.

- She led the building of Michigan's 10,000-member parent coalition network, Michigan's Home Visiting parent leadership system and the nationally recognized publication "Stepping Up and Speaking Out: The Evolution of Parent Leadership in Michigan."
- She has raised two daughters with special health needs.

Manisha Franklin

Business Development Director, Empire BCBS (Anthem), NYC, Elevance Health

- Elevance Health was formerly known as Anthem, Inc.
- Manisha has been in this role for the past nine years and also spent 25 years as the Associate Vice President of Community Relations and Special Events for HealthPlus Amerigroup, a Wellpoint company. She previously worked for an additional 14 years as the Director of Community Relations for Amerigroup Corporation.



Andrew Garner, MD, PhD

Pediatrician & Clinical Professor of Pediatrics, Case Western Reserve University School of Medicine

- Andrew is a pediatrician with Partners in Pediatrics in Westlake, OH and is a member of the UH Rainbow Care Network, the region's largest coordinated group of medical professionals providing care to children. He is also a Clinical Professor of Pediatrics at Case Western Reserve University School of Medicine.
- He is an expert on early brain development and the factors affecting it and has done extensive research on improving access to mental health services.
- Andrew is a Past President of the Ohio Chapter of the American Academy of Pediatrics and co-authored its policy statement on preventing childhood toxic stress and promoting relational health. He is also a frequent speaker on early brain and child development, preventing childhood toxic stress and promoting early relational health. In 2018, he co-authored a book entitled "Thinking Developmentally: Nurturing Wellness in Childhood to Promote Lifelong Health."
- He completed his internship and residency in pediatrics at The Children's Hospital of Philadelphia.
- BS, Psychobiology, Swarthmore College (1989); PhD, Neuroscience, Case Western Reserve University (1996); & MD, Neuroscience, Case Western Reserve University (1997).



2024 Leadership Conference Bios

Natalie Gilbert

Program Officer, Mental Health & Well-Being, Arthur M. Blank Family Foundation

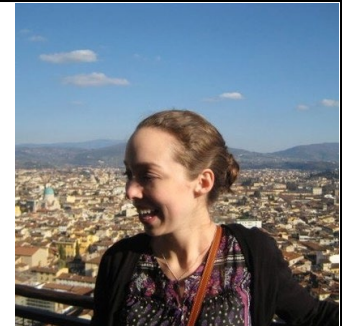
- The Arthur M. Blank Family Foundation has historically invested in education, parks and green space, youth development and community redevelopment, and primarily gives in GA and MT. Arthur Blank co-founded The Home Depot.
- Based in Billings, MT, Natalie has been affiliated with the Foundation for more than five years, working at Mountain Sky Guest Ranch, West Creek Ranch and serving as a Program Officer with AMB West Philanthropies.
- BS, Communication and Media Studies, Christopher Newport University (2010).



Leah Gillen

Associate Director of Learning & Innovation, Reach Out and Read National

- Leah has worked with Reach Out and Read National for the past four years. She is currently the Associate Director of Learning and Innovation and previously served as a Project Manager.
- She is also an MPH candidate at the Johns Hopkins Bloomberg School of Public Health, with an anticipated graduation date of May 2025.
- Previously, she was an administrator for the National Telenursing Center and an Admissions Advisor with CAPA: The Global Education Network.
- BA, History, Italian and Global & International Studies, Penn State University (2013).



Mariana Glusman, MD

Medical Director, Reach Out and Read Illinois

- Mariana has dedicated her career to decreasing health and educational disparities among low-income children. She is an Associate Professor of Pediatrics at Northwestern University's Feinberg School of Medicine and an attending pediatrician at the Ann and Robert H. Lurie Children's Uptown Clinic where she has cared for patients for the past 22 years. She is also the Medical Director for Reach Out and Read Illinois.
- In addition, she is the Medical Director of the Schreiber Family Center for Early Childhood Health & Wellness, the Associate Medical Director of the Patrick M. Magoon Institute for Healthy Communities, and an Associate Professor of Pediatrics at the Northwestern University Feinberg School of Medicine.
- She is current president of the Illinois Chapter of the American Academy of Pediatrics and is the author of "I Love You Like Sunshine: How Everyday Play and Bedtime Stories Grow Love Connections and Brainpower," a book for newborns and their caregivers.
- BS, Psychology, Brown University & MD, The University of Chicago Pritzker School of Medicine.



2024 Leadership Conference Bios

Helen Goldberg

Director, Coleman Family Ventures

- Coleman Family Ventures is a family office focusing their philanthropy on youth, climate, health and community endeavors.
- Chase and Stephanie Coleman have funded this philanthropy. Both come from old family wealth. Stephanie is also a co-founder of Valentines Farm, a small, biodynamic farm located in Old Brookville, NY. Chase is the founder of Tiger Global Management, a hedge fund that oversees \$58B in assets.
- Helen previously spent four years as a Director at Arabella Advisors and as a Senior Strategy Advisor with the International Rescue Committee.
- She serves as an Advisory Board Member of The Resolution Project.
- BA, International Studies & Spanish, The Johns Hopkins University (2010) & MBA, Yale School of Management (2016).



Becca Graves

Executive Director, Perigee Fund

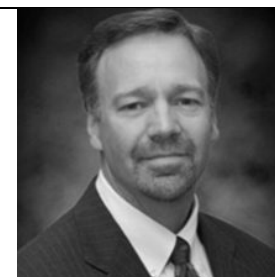
- The Perigee Fund partners with organizations whose initiatives support the infant-caregiver relationship and increase the capacity for all families to experience healthy, joyful connections. Funding is focused on Mental Health and Family Supports for Well-Being, particularly initiatives that center on communities of color.
- Becca has been with the Fund for six years, serving in her current role for five and spending just over one year as the Director of Strategic Investments.
- Prior roles included 17 years as a Managing Director of FSG Social Impact Consulting and five years as the Executive Director of CF Insights.
- She volunteered as a Seattle Board Member with Reading Partners for three years and served on the COVID-19 Response Fund Advisory Group, focused on childcare grants.
- BA, Economics, Dartmouth College (1996).



Curt Gray

Board Member

- Curt is the Senior Vice President of Human Resources & Administration for BAE Systems, Inc., where he is responsible for all human resources and employment-related activities for the company's US-based operating groups.
- Previously, he was the Director of People for the Boeing Company's Phantom Works and also worked for Rockwell.
- BA, Personnel Administration, University of Colorado & MBA, Organization Development, Pepperdine University.

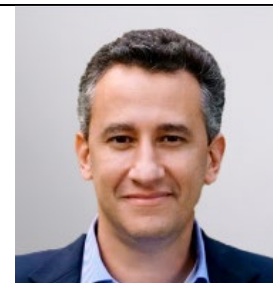


2024 Leadership Conference Bios

Josh Barrett Green

Board Chair, Reach Out and Read Greater New York

- Josh has been the Board Chair of Reach Out and Read Greater New York since January 2023. He is the COO and co-founder of Novata, which empowers private companies to collect, analyze, benchmark and report relevant ESG (environmental, social & governance) information.
- He previously was co-founder and CEO of Panjiva, a supply chain data start-up that became an Inc. 500 company before it was acquired by S&P Global. Following the sale of Panjiva, he joined the leadership team of S&P Global Market Intelligence.
- BA, Government, Dartmouth College (2000); MPA, Harvard Kennedy School (2006); & MBA, Harvard Business School (2006).



Jim Guevara, MD

Pediatrician, Karabots Pediatric Care Center (CHOP)

- Jim is a pediatrician at Karabots Pediatric Care Center in West Philadelphia, part of the Children's Hospital of Philadelphia (CHOP). He also holds positions at the Department of Biostatistics and Epidemiology as Assistant Director for Faculty and Trainee Diversity, where he is involved in developing and evaluating diversity policies for faculty and trainees.
- He is the Director of Interdisciplinary Initiatives at PolicyLab: Center to Bridge Research, Practice & Policy at CHOP, where he participates in developing and disseminating child health policy research. He also participates as a Senior Fellow at the Leonard Davis Institute of Health Economics in interdisciplinary health services research and as a Senior Scholar at the Center for Clinical Epidemiology and Biostatistics where he teaches a graduate course in meta-analysis and mentors students.
- He is a member of the Early Childhood Mental Health Steering Committee for the Commonwealth of Pennsylvania and nationally participates as a member of the Executive Research Committee of the Academic Pediatrics Association. His research interests include the organization, financing and delivery of primary healthcare services to children with developmental and behavioral disabilities.
- MD, Northwestern University & MPH, University of Washington.



Trude Haecker, MD

Board Chair & Medical Director, Reach Out & Read, Children's Hospital of Philadelphia

- Trude is the Medical Director of Global Patient Services at Children's Hospital of Philadelphia, where she oversees medical care for CHOP's international patients and coordinates with staff to provide comprehensive pediatric healthcare while families are here in the United States.
- She has 25 years of experience as a physician at CHOP and has worked to establish its primary care center network as well as bringing Reach Out and Read to Philadelphia in 1996.
- She has written about the medical care and developmental needs of young children at risk and those in foster care, as well as served as the President of the Pennsylvania Chapter of the American Academy of Pediatrics.



2024 Leadership Conference Bios

Blair Hammond, MD

Co-Founding Director & Director of Medical Education, Mount Sinai Parenting Center

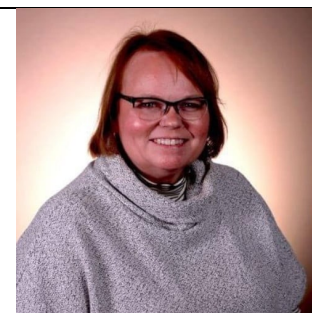
- The Mount Sinai Parenting Center aims to transform the way pediatric healthcare is delivered by maximizing opportunities to promote strong parent-child relationships and early childhood development within everyday healthcare interactions.
- Blair is also a pediatrician and an Assistant Professor at Icahn School of Medicine at Mount Sinai. She continues to be involved in medical student and resident education in addition to her general pediatric practice.
- BA, Dartmouth College; MD, Dartmouth College.



Audra Haney

Early Relational Health Specialist/OKAIMH Director, Potts Family Foundation

- The Potts Family Foundation is committed to accelerated investments in four key areas that can make a huge difference in the future of Oklahoma's children: Family Support, Early Learning, Preventive Health Care and High-Quality Childcare.
- Audra serves as both an Early Regional Health Specialist with the Foundation and as Executive Director of the Oklahoma Association for Infant Mental Health.
- She has worked with the Foundation for just two months but has spent her career working on behalf of children and families, working in foster care, outpatient mental health, for SoonerStart, Oklahoma's Early Intervention Program, and most recently at the Oklahoma Department of Mental Health and Substance Abuse Services as the Senior Manager for Infant and Early Childhood Mental Health.
- A native of southwest Oklahoma, she enjoys singing with the award-winning Oklahoma City Chorus of Sweet Adelines International.
- BA, Oklahoma Christian University & MSW, The University of Texas at Austin (1995).



Erin Henry

Chief Development Officer, Reach Out and Read National

- Erin is the Chief Development Officer for Reach Out and Read's National Center and leads its overall fundraising efforts.
- For the past two decades, she has spent much of her career as a fundraiser for academic medicine, working primarily in corporate and foundation relations, strategic partnerships and events for Brigham and Women's Hospital, Lahey Medical Center and Tufts Medical Center.
- She is a former member of the Board of Governors for the Human Rights campaign and has served on numerous professional fundraising panels.
- BA, English, University of Nevada, Las Vegas.



2024 Leadership Conference Bios

Pam High, MD

***Professor of Pediatrics, Alpert Medical School of Brown University & Director of Developmental Behavioral Pediatrics, Hasbro Children's Hospital
Volunteer, Reach Out and Read Rhode Island***

- Pam is the Director of Developmental Behavioral Pediatrics at Hasbro Children's Hospital and a Professor of Pediatrics (Clinical) at the Alpert Medical School of Brown University. She also serves as Director of both the Rhode Island Leadership Education in Neurodevelopmental and Other Related Disabilities training program and the Brown University Developmental-Behavioral Pediatrics Training Program.
- Her clinical and research interests include early childhood behavioral issues such as colic, sleep and feeding issues, developmental and behavioral screening, and addressing the interrelationship of medical and psychological issues in childhood.
- She serves on the Rhode Island Early Learning Council and the boards of Rhode Island Kids Count and Reach Out and Read Rhode Island. Previously, she was the Chair of the American Academy of Pediatrics' Committee on Early Childhood, Adoption and Dependent Care and served as the President of the Society for Developmental and Behavioral Pediatrics.
- She was the first woman pediatric chief resident at the University of California San Francisco.
- MD, University of Florida College of Medicine (1976).



Ira Hillman

Strategy Lead, Bonding, Einhorn Collaborative

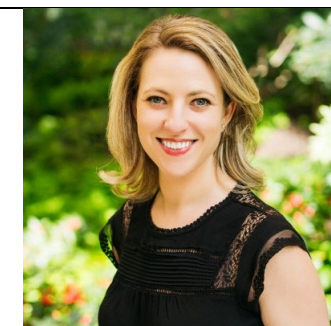
- The Einhorn Collaborative works with a wide range of cultural influencers, researchers, community leaders and funders to help Americans build stronger relationships, embrace our differences and rediscover our shared humanity – so we can solve our most urgent challenges together.
- Ira leads Einhorn's Bonding strategy, supporting collectives of funders and programs that help parents and their babies establish and maintain emotional connection from birth. He was a member of the 2023 Steering Committee that launched Nurture Connection, the movement to promote strong, positive and nurturing early relationships to build healthier, resilient and more connected communities.
- Previous roles included serving as the Chief Operating Officer of the National Breast Cancer Coalition and the Managing Director of Round House Theatre.
- BA, Communications/Economics, University of Pennsylvania (1992).



Jennifer Hoos Rothberg

Executive Director, Einhorn Collaborative

- The Einhorn Collaborative works with a wide range of cultural influencers, researchers, community leaders and funders to help Americans build stronger relationships, embrace our differences and rediscover our shared humanity – so we can solve our most urgent challenges together.
- Jennifer leads the team's efforts to advance their mission in partnership with the Founder and Trustee, David Einhorn, including setting strategic priorities, monitoring progress against goals and nurturing collaborations with key partners and peers.
- She previously served as the Development Director for Hillel at Cornell University for almost three years.



2024 Leadership Conference Bios

- She is a member of the Leap of Reason Ambassadors Community, the Town School Board of Trustees, Cornell University Council and the NationSwell Council.
- BS, Urban and Regional Studies, Cornell University (2004) & Master of Regional Planning, Cornell University (2005).

Kristen Hoplin

Executive Director, Reach Out and Read Minnesota

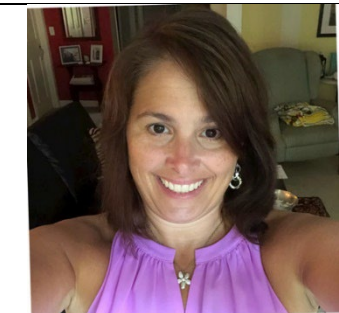
- Kristen has been the Executive Director of Reach Out and Read Minnesota since 2018, after having also served as its Program Director for almost five years.
- She has fifteen years of experience in the nonprofit sector and has worked at Help At Your Door, New Orleans Outreach, teachNOLA, Arthritis Foundation and Northeast Youth & Family Services.
- She has served on several boards, including Propeller, Partnership Academy, and the Junior League of Minneapolis.
- BA, Psychology, Communications & Asian Studies, St. Olaf College (2003) & MA, Social Sciences, Youth Development & Public Policy, The University of Chicago (2004).



Chris Hughes

Corporate & Foundation Relations Officer, Reach Out and Read National

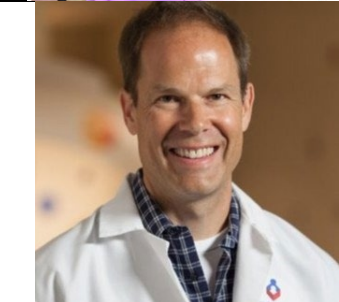
- Chris has worked at Reach Out and Read for the past 13 years and currently serves as its Corporate and Foundation Relations Officer. She previously held several other roles including oversight of the Connecticut and Massachusetts markets.
- She has also worked as a financial administrator for small businesses in Connecticut.
- BBA, Marketing, University of Massachusetts Amherst & MBA, Rensselaer at Work.



John Hutton, MD

Pediatrician, University of Texas Southwestern Medical Center & Medical Advisory Board Member, Reach Out & Read

- John is an Associate Professor in the Division of General and Community Pediatrics at UT Southwestern Medical Center and an attending physician at Children's Medical Center, Dallas. He is also an Adjunct Associate Professor of General and Community Pediatrics at Cincinnati Children's Hospital Medical Center.
- He has published over 40 children's books, many with health-promoting themes, and is collaborating on a series of picture books introducing organ systems and telling children how they can stay healthy. Inspiring this work is his experience owning and operating an award-winning, independent children's bookstore, Blue Manatee, for almost 20 years.
- He is "spokes-doctor" for the Read Aloud 15 MINUTES national campaign, works closely with the Children and Screens Institute of Digital Media, and is a co-author of the forthcoming American Academy of Pediatrics Literacy Promotion Guidelines.
- He and his team have published the first studies in the world using MRI to quantify relationships between home reading and digital media environments on brain structure and function in preschool-age children.
- BS, Mathematics, Davidson College (1991); MSOR, Operations Research, University of North Carolina at Chapel Hill (1994); MD, University of Cincinnati (1998); & MSHS, Clinical and Translational Research, University of Cincinnati (2015).



2024 Leadership Conference Bios

Shawn Jenkins

Strategy Lead, Bridging, Einhorn Collaborative

- The Einhorn Collaborative works with a wide range of cultural influencers, researchers, community leaders and funders to help Americans build stronger relationships, embrace our differences and rediscover our shared humanity – so we can solve our most urgent challenges together.
- Shawn leads the Bridging strategy, developing and equipping the next generation of bridge-builders.
- Prior to this role, he spent four years at the College Board as the Director of Strategic Partnerships, overseeing external partnerships and strategic access initiatives to broaden access to computer science education and strengthen civic participation. He also spent almost a decade working to improve college access and providing direct service for talented young people from underserved communities. He worked for Franklin & Marshall College, building recruitment and support programs for students who were the first in their families to attend college through the Next Generation Initiative.
- In 2014, he played a key role in launching Cooperman College Scholars, a New Jersey scholarships program aimed at helping 500 young people graduate from college with the support of a \$25 million grant.
- He is a Board Member at Explore Schools and a Former Trustee and Vice Chair of the Buildings, Grounds & Sustainability Committee at Franklin & Marshall College.
- BA, Environmental Studies, Franklin & Marshall College (2010) & MS, Higher Education Administration, University of Pennsylvania (2014).



Manny Jimenez, MD

Director of Developmental & Behavioral Pediatrics Education, Boggs Center on Developmental Disabilities, Rutgers Robert Wood Johnson Medical School

- Manny is the Director of Developmental and Behavioral Pediatrics Education at the Boggs Center on Developmental Disabilities at Rutgers' Robert Wood Johnson Medical School and an Attending Developmental and Behavioral Pediatrician at Children's Specialized Hospital.
- He is also an Associate Professor of Pediatrics & Family Medicine and Community Health at the Medical School. His work focuses on promoting optimal developmental outcomes for vulnerable children and making the health system more responsive to their needs.
- He is a member of the American Academy of Pediatrics' Bright Futures 4th edition National Preventive Care Guidelines Expert Panel, editorial board member for the Journal of Developmental and Behavioral Pediatrics, and state physician champion for Help Me Grow New Jersey.
- MD, Rutgers Robert Wood Johnson Medical School.



Manya Jyotishi, PhD

Research Specialist, Institute for Child Success (ICS)

- The Institute for Child Success partners with governments, communities, foundations, nonprofit organizations and programs seeking to improve outcomes for young children and families. It works on measurement & evaluation, policy research & advocacy, professional empowerment & learning, strategic finance planning, and systems change.
- Manya supports the FUEL for 50 Project and other research and evaluation initiatives.



2024 Leadership Conference Bios

- She is a developmental psychologist with extensive experience in qualitative and quantitative methods, project management and working with vulnerable populations (children with ASD, justice-involved youth, and women with history of substance abuse).
- BA, Psychology, Hunter College of CUNY (2012); MS & PhD, Developmental Psychology, University of Connecticut (2016 & 2019).

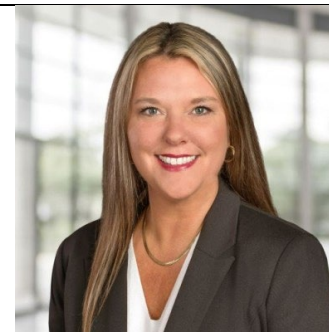
Evan Keyser **Board Member**

- Evan is an Operating Advisor with Nautic Partners, a middle-market private equity firm with a focused investment strategy targeting the health care, industrial and services sectors.
- He previously served as the Senior Vice President and Chief Development Officer of LifePoint Health, a leading health care company that owns and operates community acute care and behavioral health hospitals, physician practices, outpatient centers and post-acute facilities across the country. Prior to this role, he spent nearly ten years with Citi's Global Healthcare Investment Banking group, where he was involved in the successful execution of numerous capital raising events and M&A transactions for prominent health organizations.
- In addition to his board work with Reach Out and Read, he has also volunteered with the Juvenile Diabetes Research Foundation International.
- BS, Architectural Engineering, Kansas State University (2003) & MBA, Carnegie Mellon University (2008).



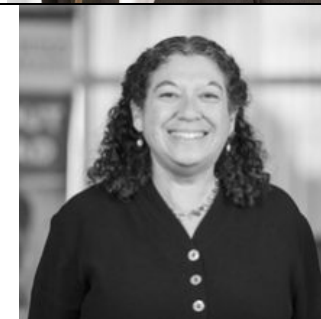
Tara Kimbell **Growth and Engagement Marketing Strategy Director, Elevance Health**

- Elevance Health was formerly known as Anthem, Inc.
- Tara has been with the company in this same role for the past 11 years.
- She is an Advisory Council Member of Voice Inc., empowering children and their families to lead healthy and productive lives by promoting success in education, nurturing wellness in mind and body, and developing skills in tomorrow's global leaders.
- BS, Texas A&M University (1998).



Perri Klass, MD **Board Member & National Medical Director**

- Perri is a professor of journalism and pediatrics at New York University, where she works in the pediatric clinic at Bellevue Hospital. She is the Director of Graduate Studies at the Arthur L. Carter Journalism Institute and a published author, writing both fiction and non-fiction, covering topics including children and families, medicine, food, travel and knitting.
- She was a member of the National Advisory Council for the National Institute of Child Health and Human Development, has sat on the Honorary Committee of the Phillips Brooks House Association at Harvard University, and is a Presidential Nominee to the Advisory Board of the National Institute for Literacy.
- BS, Biology, Harvard University (1979) & MD, Harvard University (1986).



2024 Leadership Conference Bios

Lambrina Kless, PhD

Chief Operating Officer, Reach Out and Read National

- Lambrina has been the Chief Operating Officer of Reach Out and Read for the past five years. She leads the national network in developing and refining the systems and processes needed to drive programmatic excellence.
- Previously she was the Chief Program Officer at the National Center for Teacher Residencies and the National Director of Learning & Innovation at Teach Plus.
- BA & MA, Comparative Literature, Harvard University & PhD, Education, Administration & Policy Analysis, Stanford University.



Betsy Krieger

Trustee, Zanvyl and Isabelle Krieger Fund

- The Zanvyl and Isabelle Krieger Fund focuses its efforts on housing and community development, behavioral health and healing, environmental justice, and families with young children birth to three years old, all primarily located in the Baltimore, MD area.
- Betsy's late parents started the Foundation, of which she has been a trustee since 1980.
- She also was the Co-Founder and Executive Director of the Waverly Family Center, one of Maryland's first four family support centers., and co-founder of Be The Change, focused on connecting the large community of concerned and dedicated activists to organizations, movements and candidates promoting social, racial and climate justice at all levels of government.
- Studied social work at the University of Maryland.



Tiffany Kuehner

Board Member

- Tiffany is a Vice President and Banker in the Greenwich, CT office of J.P. Morgan Private Bank. She partners with her clients to help grow, protect, preserve, and enhance their wealth. She is passionate about working alongside individuals and families to transform their life goals into a deeply impactful legacy.
- She spent the first part of her career in leadership roles within the global nonprofit sector, championing sustainable solutions to some of the world's most complex problems.
- She is a Board Emeritus Member and former Board Chair for Hope for Haiti, an organization founded by her grandmother which works to improve the quality of life for the Haitian people, particularly children. Currently, she is a Partner with Social Venture Partners Connecticut, a volunteer with the New Canaan Community Foundation, and a YPO New York Polaris Board Member.
- BA, Women's Studies, Georgetown University (2007).



2024 Leadership Conference Bios

Lori Lake

Executive Director, Reach Out and Read Oklahoma

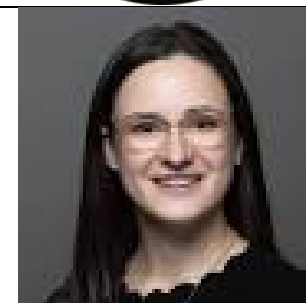
- Lori is the Executive Director of Reach Out and Read Oklahoma and has served in this role for almost 11 years.
- Previously, she was a consulting teacher in the Metropolitan Nashville Public Schools system. She joined the nonprofit world after a 32-year career in the public education system, where she worked as a special education teacher, reading interventionist, consulting teacher and instructional/literacy coach.
- BS, Special Education & Med, Education (alma mater unknown).



Andréane Lavallée, PhD

Postdoctoral Research Scientist, Columbia University Irving Medical Center

- Andréane has worked as a clinical nurse and researcher in Canada.
- She began postdoctoral work at Columbia University in 2021, first as a fellow and now as a postdoctoral research scientist, studying early parent child relationships.
- She attended the Collège André-Grasset and the Université de Montréal, where she earned bachelor's and master's degrees in nursing as well as a PhD in Nursing in 2020.



Lori LeGendre

Initiative Director, Reach Out and Read Ohio

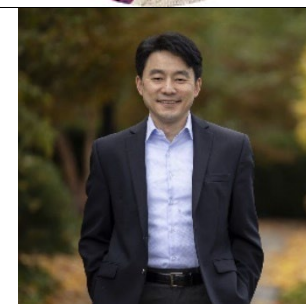
- Lori joined Reach Out and Read in 2000 in Northwest Ohio, expanding regional presence from one to twenty-five locations.
- She has worked in health-based parenting/early childhood programming for 32 years including pediatric in-patient care, NICU service coordination, perinatal coaching and teen parenting education.
- BS, Child Development, Central Michigan University (1980).



JunLei Li

Co-Chair, Human Development & Education Program, Harvard Graduate School of Education

- JunLei co-chairs the Human Development & Education Program and serves as the Saul Zaentz Senior Lecturer of Early Childhood Education at the Harvard Graduate School of Education.
- His research and practice focus on understanding and supporting the work of helpers, those who serve children and families on the frontlines of education and social services. He developed the "Simple Interactions" approach to help identify what ordinary people do extraordinarily well with children in everyday moments and made that the basis for promoting positive system change. His work is significantly influenced and inspired by the work of Fred Rogers, the creator of Mister Rogers' Neighborhood.



2024 Leadership Conference Bios

- Previously, he served as the co-director and Rita M. McGinley Professor for Early Learning & Children's Media at the Fred Rogers Center at Saint Vincent College.
- He serves on boards and advisory panels, including Childcare Aware of America, Parents as Teachers, Turrell Fund, Head Start National Center for Family & Community Engagement, and various initiatives at the U.S. Administration for Children and Families.
- BS, Computer Science, University of Notre Dame (1995) & PhD, Developmental/Cognitive Psychology, Carnegie Mellon University (2003).

Melissa Litwin

Program Director, Early Childhood, Taub Foundation

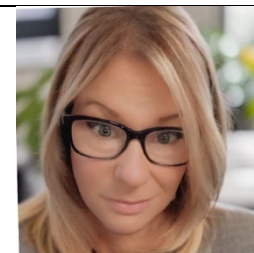
- Melissa is a Program Director at The Henry and Marilyn Taub Foundation, where she is responsible for building and implementing new grant-making programs to serve children from birth through age eight with a special emphasis on literacy and academic success. The chief funding goal is for children to read at grade level by the time they finish third grade. The Foundation supports programs in Bergen and Passaic Counties in New Jersey.
- Previously, she was a Senior Consultant at The Whelan Group and spent two years with the Artists Space, a non-profit visual gallery.
- BA/BS, English & Psychology, University of Washington (1994) & MBA, Strategy & Operations Management, The Wharton School (2003).



Alison Logan

Executive Director, Bridgeport Prospers

- Bridgeport Prospers is a pilot program for Connecticut's DSS, bringing together education, hospitals, schools, public safety, early childhood experts and other relevant Department of Social Services programs to improve the lives of infants, children and families through early detection and intervention. It is part of the StriveTogether Cradle to Career Network, a nonprofit national network of communities working to improve every child's educational success through a cross-sector, data-driven, collective-impact approach.
- In her current role, Allison's advancement of the birth to age three "Baby Bundle" is receiving recognition across the state and nationally. The "Bundle" is designed to promote and support evidence-informed policy, practice and programs that promote healthy births, home-based early childhood support, and school readiness.
- She has spent the past 18 years improving the lives of children and families in Bridgeport, co-developing the Total Literacy and Total Learning approaches and becoming a Total Learning Master Trainer and mentoring countless Bridgeport teachers. She was the Director of Educational Initiatives for Action for Bridgeport Community Development, Inc. and served as its liaison with Bridgeport Public Schools.
- She is a member of the Public Health Advisory Board at Sacred Heart University.
- BS, Music Education, Central Connecticut State University & MS, Early Childhood Studies & Early Childhood Neurobiology, Central Connecticut State University.



2024 Leadership Conference Bios

Dayna Long, MD

Steering Committee, Nurture Connection, University of California, San Francisco

- Dayna is a Professor of Clinical Pediatrics and has been a primary care pediatrician for more than 20 years. She is Co-Director of the Center for Child and Community Health, whose mission is to be a positive force for all children to live a full, vibrant and healthy life. She has dedicated her career to eliminating childhood health inequities that lead to poor health, financial and educational outcomes for families and young children of both individual and population levels.
- She has led research studies on adversity, trauma and resiliency and is Co-Principal Investigator of the Pediatrics Adverse Childhood and Resilience Study. She also founded the Family Information and Navigation Desk which addresses the social and environmental factors affecting children's health.
- She is a steering committee member of First 5 Alameda County/Help Me Grow, co-chair for the City of Oakland's Health Impact Table, and a consultant to California's Surgeon General of the ACES Aware Initiative.
- In 2014, she received the prestigious National Service Award from the Corporation for National Service from Presidents Clinton and Obama and has received many other illustrious accolades.
- BS, Biology & BA, African American & African Studies, Stanford University (1994) & MD, George Washington University School of Medicine & Health Sciences (1999).



Elida Lopez

Senior Specialist, Population Health Management, CareSource (GA)

- CareSource is a healthcare coverage company. In the State of Georgia, it currently serves Georgia Medicaid and PeachCare for Kids® members enrolled in the Georgia Families® program and women enrolled in the Planning for Healthy Babies program.
- The CareSource Foundation funds nonprofits that are working to eliminate poverty, provide much-needed services to low- and moderate-income families, encourage healthy communities, develop innovative approaches to address critical health issues, and enhance the lives of a diverse array of children, adults and families.
- Elida has worked with the company for seven years, in her current role for almost two and in community education for the entirety of her tenure thus far.
- She studied practical nursing, vocational nursing and nursing assistant training at Lanier Technical College (1999).



Nicole Loveless

Parent Leader for Indigenous Communities, Act Early, CDC

- Act Early is a government-sponsored program that encourages parents to act early if their child is not reaching certain developmental milestones from birth to five years.
- Nicole is a mother of five children and resides in Albuquerque, NM. She is a member of the Pueblo of San Felipe and connected with multiple tribes in New Mexico and Arizona. She is part of multiple projects where she can bring her Native American perspective to influence programs, policy and research.
- She has been involved with programs including Native American Professional Parent Resource, Inc., National Home Visiting Network, and Child Trends: Advancing Health Equity in Response to COVID.

2024 Leadership Conference Bios

Sarah MacLaughlin

Senior Training & Technical Assistance Specialist, Pediatrics Supporting Parents, Zero to Three

- Pediatrics Supporting Parents presents a nearly universal access point for pediatricians and parents to partner in promoting and supporting young children's social and emotional well-being and nurturing parent-child relationships. It seeks to transform pediatric well-child visits to strengthen early relational health and create lasting change that helps children succeed.
- Sarah is a licensed social worker, parent educator and author of two award-winning books for parents: *What Not to Say: Tools for Talking with Young Children* and *Raising Humans with Heart: Not a How-To Manual*. She is also a trained facilitator for multiple parenting curricula, including Circle of Security, Hand in Hand, and Positive Discipline. She has worked with children and families in a variety of educational, training and support settings for over 25 years.
- Her previous roles include Senior Writer, Training Specialist and Senior Editor for HealthySteps, and as the Resource Family Lead in Therapeutic Foster Care. She has also served as the Director of Parenting Education at the Center for Parenting and Play and as a teacher with Bright Horizons.
- Undergraduate degree in Early Childhood Education & Teaching, University of Maine at Farmington; BA, Women's Studies, San Francisco State University; & graduate coursework in Elementary Education & Teaching, San Francisco State University.



Aditi Mallick, MD

Acting Director, Centers for Medicare & Medicaid Services, Office of Minority Health

- The Centers for Medicare & Medicaid Services is a federal agency within the United States Department of Health and Human Services that administers the Medicare program and works in partnership with state governments to administer Medicaid, the Children's Health Insurance Program (CHIP), and health insurance portability standards.
- Aditi has served as the Acting Director since July 2023 and the Chief Medical Officer of Medicaid & CHIP since 2021.
- She is a member of the Action Collaborative on Clinician Well-Being and Resilience and an Advisor to End Well: Design for the End-of-Life Experience.
- Previously, she taught in the medicine program at GW Medical Faculty Associates and was a Senior Advisor for Health Equity & Digital Health at AVIA for less than one year. She directed the COVID-19 Response Command Center at the North Carolina Department of Health and Human Services and spent three years as an Engagement Manager with McKinsey & Company.
- AB, Social Studies, Harvard University & MD, Stanford University.



Linda Manaugh

Chief Programs Officer, Potts Family Foundation

- The Potts Family Foundation is committed to accelerated investments in four key areas that can make a huge difference in the future of Oklahoma's children: Family Support, Early Learning, Preventive Health Care and High-Quality Childcare.
- Linda has been with the Potts Family Foundation for more than six years, serving most of those years as the Director of Communications and Program Support. She describes herself as a "close friend" of Pat Potts, one of the Foundation's founders.
- She is a retired educator and life-long Oklahoman, having taught children with learning disabilities for more than 13 years, and worked as an administrator at Metro Technology Centers.



2024 Leadership Conference Bios

- Currently, she is a board member of Sunset Therapeutic Riding Center, Autism Foundation of Oklahoma, Oklahoma Association for Infant Mental Health, and Cardinal Community House, and serves as an Education Representative on the Governors Interagency Council on Homelessness. She is a former board member or volunteer with Freedom School Oklahoma City, Peace Education Institute and the Civic Center STARS Program.
- BS, Special Education and Teaching, Oklahoma State University (1971) & MEd, Education, University of Central Oklahoma (1975).

Kesi Marcano

Director of Development, Individual & Major Gifts, Reach Out and Read National

- Kesi is new to her role as the Director of Development for Individual and Major Gifts at Reach Out and Read National.
- Prior to this role, she was a Major Gifts Officer for Bread for the World for six years. She has also worked in donor relations and stewardship for The University of Texas at Austin and the University of Southern California. She began her career working with Grenzebach Glier & Associates.
- BA, Communication, University of Maryland (2005) & MBA, University of Maryland Global Campus (2013).



Emily Marchese

Executive Director, Reach Out and Read Greater New York

- Emily is the Executive Director of Reach Out and Read of Greater New York.
- Prior to this, she was the Executive Director of Roots and Wings, a privately funded social service agency that provides housing, education and case management to aged out foster young adults. She was also the Director of Foundations and Corporations for Student Sponsor Partners and Manager of High School Programs for the Partnership for Inner-City Education.
- BA, English, Cornell University (2005) & MSc, Gender Studies, London School of Economics (2006).



Melanie Martin

ROR Arizona Program Manager

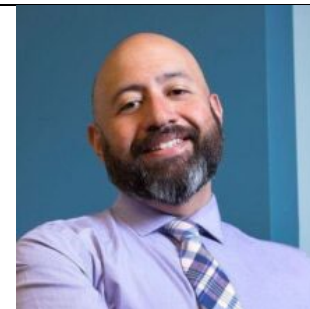
Senior Manager of Early Brain and Child Development, Arizona Academy of Pediatrics

2024 Leadership Conference Bios

Marty Martinez

CEO, Reach Out and Read National

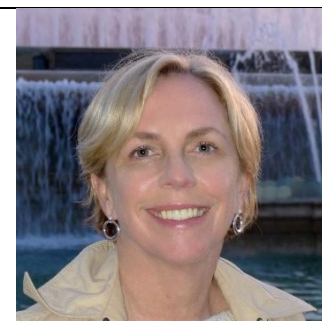
- Marty brings nearly 25 years of experience working on behalf of young people, families and underserved communities across the Greater Boston area. He has expertise in public health, nonprofit management and positive youth development.
- He previously led the City of Boston through the COVID-19 pandemic, serving as the Chief of Health & Human Services. He also spent 11 years with the Mass Mentoring Partnership, spending six of them as the President & CEO, and worked for the Boston AIDS Consortium.
- BA, Political Science & Communications, Nebraska Wesleyan University & MA, Social & Urban Policy, Non-Profit Management, Tufts University (2001).



Megan McAllister

Senior Program Officer of Education, Altman Foundation

- The Altman Foundation's mission is to enrich the quality of life in NYC by supporting programs that advance opportunity & equity for individuals, families & communities. One key area of focus is preventive and early intervention strategies.
- Megan manages a grant portfolio of approximately 50 nonprofit organizations focused on education and youth development for underserved children and youth, with a particular focus on early childhood education, college access and success, and expanded learning time.
- She serves as Co-Chair of NYC Youth and Education Funders and on the Advisory Board of HAYVN Coworking Community in Fairfield County.
- BA, English Language & Literature, Hamilton College (1982) & MS, Urban Policy & Nonprofit and Civic Leadership, Georgia State University (2004).



Jocelyn McConnell

Director, Reach Out and Read Texas

- Jocelyn has been the affiliate leader of Reach Out and Read Texas, housed at the Children's Learning Institute at UTHealth Houston, since 2015. She has been affiliated with the Hospital since 2007, supporting early childhood research projects in many roles.
- She is a licensed professional counselor whose practice focus was on clients recovering from childhood trauma.
- BS, Plan II/Social Sciences, University of Texas at Austin & MEd, Educational Psychology/Counseling, University of Houston.



2024 Leadership Conference Bios

Davida McDonald

Director of Policy & External Communications, Trust for Learning

- The Trust for Learning supports projects and investments around the country that focus on developmentally appropriate, play-based, whole-child early learning approaches.
- Davida manages external communications and policy strategies to support, amplify and promote ideal learning environments for all children.
- She has spent more than two decades working in the early care and education fields focusing on equity, public policy and advocacy from the local to the federal levels. Prior to this role, she worked as a Senior Policy Advisor at EducationCounsel and also served as a Senior Advisor for Early Childhood Development in the Office of the Deputy Assistant Secretary for Early Childhood Development in the Administration for Children and Families, US Department of Health and Human Services.
- BA, Harvard University & MPH, Maternal and Child Health, Boston University.



Terri McFadden, MD

Board Member & Medical Director, Reach Out & Read Georgia

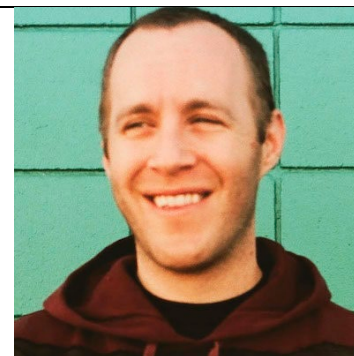
- Terri is a general pediatrician and Professor in the Department of Pediatrics at Emory University School of Medicine. She also serves as Medical Director of Primary Care at the Hughes Spalding campus of Children's Healthcare of Atlanta and the Medical Director for Primary Care with the Emory Department of Pediatrics' PARTNERS for Equity in Child and Adolescent Health program.
- Her academic and professional interests include comprehensive care for the underserved, early brain development and preschool literacy promotion, breastfeeding promotion, childhood injury prevention and medical education.
- She serves on the AAP's Executive Committee of the Council on Early Childhood and as the Vice President and President-Elect of its Georgia chapter.
- BS, Spelman College & MD, The Johns Hopkins School of Medicine.



Nathan McNamara

Director of Corporate and Foundation Relations, Reach Out and Read National

- Nathan has been the Director of Corporate and Foundation Relations at Reach Out and Read National since 2017. He has also worked as a journalist and writer, contributing to publications including the New York Times, the Atlantic, the Washington Post, the Village Voice and others.
- He spent almost four years as an adjunct professor at The Johns Hopkins University, teaching fiction and poetry and was a Development Assistant with Maryland Family Network.
- BA, English & Psychology, Vassar College & MFA, Fiction, The Johns Hopkins University.



2024 Leadership Conference Bios

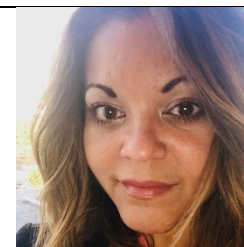
Kimberly McPherson ***Senior Program Officer, St. David's Foundation***

- St. David's Foundation is one of the largest health foundations in the United States that, through a unique partnership with St. David's Healthcare, strategically reinvests proceeds from the hospital system back into the community, with the goal of advancing health equity and improving the health and well-being of the most underserved in Central Texas. It also operates the largest mobile dental program in the country providing charity care.
- Kimberly develops strategies for the Foundation's programs and investments that support children and young adults.
- Prior to this role, she worked in the mental health and health policy fields at Health Management Associates, the Texas Health and Human Services Commission, Mental Health America and Mental Health Network.
- BA, Psychology, Pitzer College & MPA, Public Affairs, LBJ School at the University of Texas at Austin.



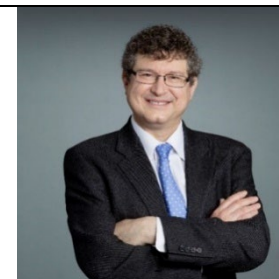
Jeannette Mejias ***Parent Advocate***

- After her first child was diagnosed with autism, Jeannette partnered with Medical Home practices to provide awareness to pediatricians about the importance of early screening and early intervention services. Since then, she has become a passionate parent advocate and community leader.
- She has supported families through the Children and Youth with Special Health Care Needs group, part of SPAN Parent Advocacy Network, for the last 10 years. She is currently the Director of the Special Education Volunteer Advocates project where she leads a diverse team and has trained over 220 volunteer parents to serve as mentors to families who are looking for support to advocate for their child at IEP meetings related to inclusion and transition to adult life planning.
- She is the Vice President of Board at the Egenolf Early Childhood Center and the recipient of the New Jersey Institute on Disabilities Community Award. She is also a Managing Director at Kynect, providing savings on essential services.



Alan Mendelsohn, MD ***Developmental-Behavioral Pediatrician, NYC Health & Hospitals/Bellevue***

- Alan is a Developmental-Behavioral Pediatrician and Professor of Pediatrics and Population Health at NYU Grossman School of Medicine and NYC Health & Hospitals/Bellevue. He is an internationally recognized scientist who has focused his career on the design, study and implementation of preventive interventions supporting early relational health, building on opportunities for universal engagement of families in the pediatric health care setting.
- He developed PlayReadVIP which uses real-time, strengths-based video feedback at pediatric health visits to support early relational health through positive child experiences such as parent-child reading aloud and play.
- He served for seven years on the Executive Committee of the American Academy of Pediatrics' Council on Early Childhood and recently completed a term as Board Member of the Society for Developmental and Behavioral Pediatrics.
- BS, Economics, Princeton University (1984) & MD, SUNY Stony Brook School of Medicine (1989).



2024 Leadership Conference Bios

Tara Millbrand

Project Director, Reach Out and Read San Diego

- Tara is the Associate Executive Director of the American Academy of Pediatrics, CA Chapter 3 and the Project Director for Reach Out and Read San Diego. She joined the organization in 2005 when Reach Out and Read was getting started in that area.
- BA, Psychology, University of California, San Diego (1993) & MSW, Administrative Social Work, San Diego State University (1998).



Anna Miller-Fitzwater, MD, MPH

Pediatrician & Clinical Associate Professor of Pediatrics, Atrium Health Wake Forest Baptist

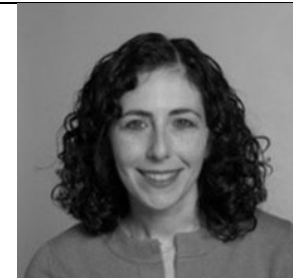
- Anna is a Clinical Associate Professor of Pediatrics at Atrium Health Wake Forest Baptist, a role she has held for the past 15 years, and a practicing pediatrician. She is a strong advocate for Reach Out and Read. She also spent three years as the Chief Medical Officer for Emtiro Health.
- She is the Treasurer of the North Carolina Pediatric Society and mentors students at the Wake Forest University School of Medicine.
- MD, MPH, University of North Carolina at Chapel Hill.



Leora Mogilner, MD

Board Member & Medical Director, Reach Out & Read Greater New York

- Leora is an Associate Professor of Pediatrics and Associate Program Director for the Pediatric Residency Program at the Icahn School of Medicine at Mount Sinai in New York City. She serves as Director of Advocacy for the Department of Pediatrics and oversees the resident Advocacy and Community Pediatrics Rotation and founded the Reach Out and Read program at Mount Sinai in 1997.
- She oversees the pediatric social determinants of health screening programs at the Mount Sinai pediatric clinic and is involved in research on social determinants of health, early literacy and medical education.
- She is a member of the AAP Committee on Early Childhood Education as well as its Subcommittee on Early Childhood Literacy, serves as Co-Director of the New York State Pediatric Advocacy Coalition, and co-chairs the Academic Pediatric Association's Advocacy Education Special Interest Group.
- MD, Weill Medical College of Cornell University.



2024 Leadership Conference Bios

Jessica Mortensen

Regional Executive Director, Reach Out and Read Northwest

- Jessica is the Executive Director of Reach Out and Read's Northwest region, which includes the states of Oregon and Washington. She was introduced to the organization in 2003 when she served as a site coordinator, supporting the program's implementation in a health clinic. Later, she joined the team in 2010, overseeing the Washington project, before helping with the creation of the Northwest Region in 2021.
- For more than 20 years, she has been a leader in initiatives to transform health care to better serve and partner with families using evidence-based practices.
- She has worked with the Arcora and Crohn's & Colitis Foundations, as well as the University of Washington Department of Pediatric Dentistry.
- BA, Spanish & History, Whitman College (2000) & MLIS, Library & Information Science, University of Washington (2007).



Tanya Munroe

Director of Partnerships, Centering Healthcare Institute

- The Centering Healthcare Institute is working towards a US healthcare system that offers not just medical interventions, but combats isolation and builds communities, empowers and educates patients, and serves as a partner to connect the most vulnerable with resources that contribute to overall health. It is driven to create a future where the risk of preterm birth, the inequities of Black women dying from pregnancy related causes and the disparities in early childhood are greatly reduced – so that every child has the potential to enjoy future life changes, social and economic opportunities and overall well-being.
- Tanya provides leadership to the Implementation Awards Initiative and has been instrumental in providing direction for developing quality and improvement processes at the organization. She has led the charge on data and outcomes management including developing processes for data collection and evaluation, site readiness assessing, Site Accreditation and consortium-building.
- Prior to this role, she was the Manager of Chapter Grants at the March of Dimes National Office and established the Office of Global Health Education & Training at Columbia University Medical Center.
- BA, Communications & Environmental Science, Marist College (1992).



Marlo Nash

Consultant & Strategic Advisor, Maryland Philanthropy Network, Potts Family Foundation & Prenatal to Five Funders

- Marlo is an award-winning leader in advocacy, engagement and systems reform. She collaborates with consulting clients on major initiatives and campaigns, often working with them during times of transition.
- Currently, she does contract work with the Maryland Philanthropy Network in its Prenatal to Five Affinity Group, with the Potts Family Foundation and with the Children's Home Society of America.
- Prior to starting a consulting business in 2020, she had spent her entire career working in executive level positions with youth-based organizations. These have included the Department of Defense Childcare Program, Rainbow Fleet & Childcare Connection, Oklahoma Institute for Child Advocacy, United Way of America, Voices



2024 Leadership Conference Bios

for America's Children, Alliance for Strong Families and Communities, National Foster Youth Institute, and Saint Francis Ministries. During her time in Oklahoma, she played an instrumental role in starting the Oklahoma Partnership for School Readiness.

- She is an advisor to the Board of Directors and volunteer co-chair of the National Trauma Campaign.
- BA, Sociology, Oklahoma State University (1989) & Public Health & Health Administration, University of Oklahoma Health Sciences Center (2000).

Dipesh Navsaria, MD, MPH

Board Member & Medical Director, Reach Out & Read Wisconsin

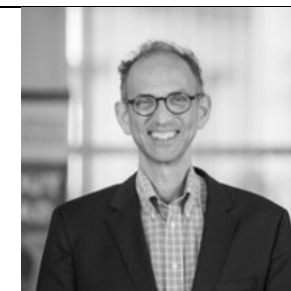
- Dipesh is an Associate Professor of Pediatrics at the University of Wisconsin School of Medicine and Public Health, and a Clinical Associate Professor of Human Development and Family Studies at the University of Wisconsin-Madison, School of Human Ecology. He has practiced primary care pediatrics in a variety of settings with special interest in underserved populations.
- He is the founding medical director of Reach Out and Read Wisconsin, hosts its podcast, and writes and speaks nationally on early brain and child development, early literacy and advocacy.
- He is the Immediate Past President of the Wisconsin chapter of the AAP and was the founding co-chair of the Early Literacy Subcommittee of the Council on Early Childhood. He is also a Presidential Board Appointee of the National Museum and Library Services Board of the Institute of Museum and Library Services, as well as a Director of the Wisconsin Early Childhood Health Consultation.
- BA, Biology & English, Boston University (1994); MPH, Boston University School of Public Health (1995); MS, Library and Information Science, University of Illinois Urbana-Champaign; & MD, University of Illinois College of Medicine (2005).



Robert Needlman, MD

Board Member, Co-Founder of Reach Out and Read, & President of the Greater Cleveland Reach Out and Read

- Robert is a pediatrician with MetroHealth Medical Center and a Professor of Pediatrics with the Case Western Reserve University School of Medicine. He also practices and teaches Developmental and Behavioral Pediatrics at MetroHealth Medical Center in Cleveland.
- He is the author of Dr. Spock's Baby Basics and co-author of the ninth edition of Baby and Childcare, Dr. Spock's classic parenting manual. He has also been a columnist for Parent and Child Magazine, and has written for parents online at DrSpock.com, parenting.com, and as a Yahoo health expert. His published academic work includes studies on pediatric literacy promotion, the effects of prenatal cocaine exposure, iron deficiency, maternal depression and resident training.
- BA, English Literature, Yale University & MD, Yale School of Medicine (1985).



2024 Leadership Conference Bios

Bergen Nelson, MD

Medical Director, Reach Out and Read Carolinas/VA/DC

- Bergen is a pediatrician at Children's Hospital of Richmond at VCU and is the Medical Director of Reach Out and Read Carolinas/VA/DC. In addition to general pediatric care, she has an interest in early childhood development, screening for developmental and behavioral concerns and promoting healthy development for children living in vulnerable circumstances.
- Prior to medical school, she was a bilingual teacher in New York City and also completed training in pediatrics at the inaugural year of UCSF's Pediatric Leadership for the Underserved (PLUS) residency program.
- She serves as an Early Childhood Champion for the Virginia Chapter of the American Academy of Pediatrics and is a member of several statewide and regional boards that serve young children, including the Virginia Early Childhood Foundation.
- Undergraduate, Wellesley College; MD, Harvard Medical School; & Robert Wood Johnson Scholars Program, University of California, Los Angeles.



Judy Newman

Chief Impact Officer, Scholastic Board Member

- Judy is the Chief Impact Officer and former President of Scholastic. She is a career literacy advocate, determined to ensure that all children declare "I am a reader."
- She founded The United States of Readers, a unique research-based Scholastic classroom program to support teachers, families and students attending high Title 1 schools across the country. She is also the Founder and President of Egg in The Hole Productions, a creative media content company for children, and author of the Bobs and Tweets Rhyming Chapter Book Series for Young Readers.
- In addition to Reach Out and Read, she has served on the boards of the Book Trust, Pajama Program and the Ruby Bridges Foundation.
- BA, Government, Connecticut College (1979); MBA, Marketing, NYU Stern School of Business (1985); & EdM, Human Development & Education/Languages & Literacy, Harvard Graduate School of Education (2022).



Chi Nguyen

Communications & Strategy Lead of Belonging, Einhorn Collaborative

- The Einhorn Collaborative works with a wide range of cultural influencers, researchers, community leaders and funders to help Americans build stronger relationships, embrace our differences and rediscover our shared humanity – so we can solve our most urgent challenges together.
- Chi leads the communications and Belonging strategy, leveraging the power of storytelling and narrative changes to foster a culture of empathy, trust, collaboration and connectedness in the United States.
- She also practices and teaches textile arts.
- She spent the last decade working in New York City government and the nonprofit sector on public defense, sustainability, tech policy, disability rights and reproductive healthcare. She most recently was the Managing Director of Strategic Communications at The Bronx Defenders and a Senior Advisor at the NYC Racial Justice Commission.
- BA, Fine and Studio Arts & Political Science, Macaulay Honors College at The City University of New York & BA, Fine/Studio Arts, Istituto Lorenzo de Medici.



2024 Leadership Conference Bios

Renée Nogales

Senior Program Officer, The Burke Foundation

- The Burke Foundation invests in transformative early childhood initiatives to build a cycle of opportunity across generations in New Jersey.
- Renée manages a portfolio of maternal and child health grants and is passionate about promoting health, education and economic equity for children and families in under-resourced communities so that they can thrive.
- Earlier in her career, she taught English to preschool and elementary students in Japan and did policy research shepherding the development, implementation and sustainability of an evidence-based maternal and child home visiting model in the Northeast. Prior to joining the Burke Foundation, she worked with LENA to cultivate strategic partnerships dedicated to promoting early language development and nurturing interactions between young children and their caregivers.
- She is a board Member of the Great Schools Partnership (redesigning public education) and a volunteer with Operation Ava (animal welfare).
- BA, English, Haverford College & MPA, Public Affairs/Policy, Texas LBJ School of Public Affairs.



Holly Nuechterlein

Program Director, Louis Calder Foundation

- The Louis Calder Foundation invests in organizations that seek to provide high-quality learning opportunities for children in under-resourced communities.
- In her role as Program Director at the Foundation for the past 20 years, Holly has helped to develop strategic support for charter school growth and entrepreneurial school leaders, working to increase high-quality educational options for all communities and advance equity in education. She recently led a strategic planning process to articulate the Foundation's vision and goals, including a national focus on early literacy and two-generation family programming.
- Trustee of Wonderbound, a contemporary ballet company in Denver.
- BA, English, University of New Hampshire.



Dana Nunn, PhD

Senior Director of Early Childhood, The Valhalla Foundation

- The Valhalla Foundation aims to improve rates of academic achievement and attainment nationwide. It focuses on six areas of impact: Early Childhood, K-12 Education, Data Science, Medical Research & Talent, Environmental Innovation, and Collaborative Philanthropy.
- Dana leads the early childhood portfolio, developing the strategy and grant recommendations and managing a portfolio of early childhood grantees and social enterprises, providing strategic coaching and thought partnership to accelerate their results.
- She previously served as the Executive Chair of Thrive Foundation for Youth, a private youth development foundation that invested in evidence-based organizations seeking to scale programs that serve disadvantaged youth across the U.S. She has also worked extensively as an independent consultant in both the for-profit and non-profit sectors, leveraging her expertise in pricing strategy and quantitative analysis.

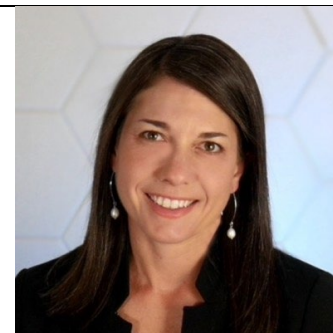


2024 Leadership Conference Bios

- She is a five-year member of the Las Lomitas Elementary School District school board and former director of the Boys & Girls Clubs of the Peninsula and Child Advocates of Silicon Valley.
- BA, Economics, Dartmouth College (1993); MA, Economics, Stanford University (1998); PhD, Business, Stanford University (2003).

Emily O'Donnell, ScD **Program Officer, Fidelity Foundation**

- The Fidelity Foundation has been investing in nonprofits for more than 50 years and supports a wide variety of organizations.
- Emily is a social scientist focused on improving the well-being of children, families and communities, promoting social change and reducing health and other inequalities. She has experience in maternal child health, early childhood development, health equity, qualitative and quantitative methods, program evaluation, continuous quality improvement and project management.
- Her current role includes responsibility for growing, managing and evaluating a broad portfolio of philanthropic investments that advances work within the sector of Economic Opportunity as well as providing content-area expertise to grantmaking efforts in the maternal child health and early childhood development space.
- She previously spent almost six years with the National Institute for Children's Health Quality as a Senior Analyst and then as the Associate Director of Research and Evaluation. She also worked in research and project management capacities for Brigham and Women's Hospital, Harvard University, and the Harvard Center for Population and Development Studies.
- BA, International Relations, The Johns Hopkins University (2003); MS, Harvard T.H. Chan School of Public Health (2008); & ScD, Social Epidemiology, Harvard T.H. Chan School of Public Health (2015).



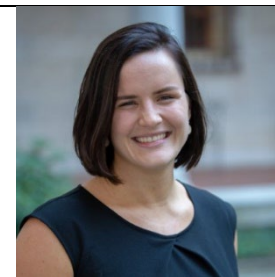
Cindy Ogrin **Director, Reach Out and Read Illinois**

- Cindy has been the Director of Reach Out and Read Illinois since 2018. She is also the Chief Strategy Officer and former Fundraising and Marketing Director of the Illinois Chapter of the American Academy of Pediatrics.
- Prior to joining Reach Out and Read, she served as the Director of Strategy & Growth for HealthConnect One, a Resource Development Director for Junior Achievement of New York, and a Sponsor Recruiter for Student Sponsor Partners.
- She is a board member of Heartland Alliance, a human rights organization, and a member of Chicago Women in Philanthropy.
- JBA, Journalism, Advertising & Public Relations, University of Wisconsin-Madison (2001) & MS, Nonprofit Management, The New School (2005).



Hannah Ongman **Director of Network Operations, Reach Out and Read National**

- Hannah is the National Director of Network Operations at Reach Out and Read. She has been in this role for almost two years and has also served as the Associate Network Director, Program Coordinator and Program Manager.
- Previously, she was a Milieu Therapist at the Ann & Robert H. Lurie Children's Hospital of Chicago and completed internships with a variety of organizations. She has also been a volunteer for the Special Olympics.
- BS, Human Development & Psychological Services, Northwestern University (2015) & Public Leadership Credential, Harvard University (2023).



2024 Leadership Conference Bios

Chinwe Onyekere

Program Officer, Vanguard

- Vanguard Strong Start for Kids™ supports early childhood development with the goal of helping children growing up in poverty to be kindergarten ready. It focuses its efforts in the high-need communities where its teams work and live (Greater Philadelphia, Charlotte, Dallas, Phoenix & London).
- Chinwe oversees two program portfolios at Vanguard, Effective Programs and Connected Communities. She also teaches in the Master of Public Health program at the University of Pennsylvania, including courses on “Methods for Public Health Practice” & “Philanthropy & Public Health Justice.”
- Previously, she spent nine years with Main Line Health in a variety of administrative roles and served as the Executive Director of Health Leads in New York. She also spent six years as a Program Officer with the Robert Wood Johnson Foundation.
- Chinwe is a Trustee of Friends’ Central School, a Partner with Social Venture Partners Philadelphia, and a Board Member of the Black Farmer Fund. Previous board roles have included Together for West Philadelphia, Free Library of Philadelphia Foundation, HealthSpark Foundation and Maternity Care Coalition.
- BA, Political Science, Wellesley College & MPH, Sociomedical Sciences, Columbia University Mailman School of Public Health. Certificates in Nonprofit Management and Business Essentials from Harvard Business School and The Wharton School.



Sallie Page-Goertz

Medical Director, Reach Out and Read Kansas City

- Sallie is the Medical Director for Reach Out and Read Kansas City and has been with the program since it first formed in her area in 1997.
- She is a part-time pediatric nurse practitioner at The University of Kansas Health System. She is also a Clinical Associate Professor at KU Medical Center where her clinical interests include breastfeeding issues and the care of children from birth through adolescents, in the outpatient setting.
- BS, Nursing, University of Kansas.



Nancy Peeler

Former Manager, Early Childhood Health, Michigan Department of Health and Human Services

- Nancy is the former manager of the Early Childhood Health program at the Michigan Department of Health and Human Services. In this role she oversaw maternal, infant and early childhood home visiting for the Health Department.



2024 Leadership Conference Bios

Sarah Pelkey

Director of Sales & Marketing, All About Books

- All About Books is a family-owned business in New York and is one of the leading providers of children's books for literacy programs across the country.
- Sarah has been with the company since 2014 and now manages the entire Sales and Marketing team.



Jim Perrin, MD

Mass General Brigham Hospital for Children & Harvard Medical School

- Jim is the John C. Robinson Chair in Pediatrics at Mass General Brigham Hospital for Children and has taught at Harvard Medical School for the past 38 years. He also heads up The Perrin Lab which studies chronic health conditions in children and adolescents, with particular focus on autism spectrum disorders.
- He founded the MGH Center for Child and Adolescent Health Policy and led it for 15 years. During his career, his research has examined asthma, middle ear disease, children's hospitalization, health insurance and childhood chronic illness and disabilities, with recent emphasis on epidemiology of childhood chronic illness and organization of services for the care of children and adolescents with chronic health conditions.
- He is a former President of the American Academy of Pediatrics, former chair of its Committee on Children with Disabilities, and past president of the Ambulatory (Academic) Pediatric Association. He also directs the Autism Intervention Research Network on Physical Health.
- AB, Chemistry, Harvard University (1964) & MD, Case Western Reserve University (1968).



Amber Pierce

State Director of North Carolina, Reach Out and Read Carolinas/VA/DC

- Amber is the State Director for Reach Out and Read North Carolina. Prior to this role, she was the Regional Program Manager supporting the Greater Charlotte and Triad Regions of North Carolina.
- Previously, she managed quality improvement projects in communities and medical practices as part of the NC Assuring Better Child Health and Development Initiative and the NC CHIPRA Quality Demonstration grant.
- Her background also includes experience in the areas of early intervention, behavioral health, social services, parent advocacy and training, and systems change strategy. She has dedicated her career to identifying and addressing gaps in early childhood systems with a mission to create resources and dialogue to open pathways that give all children an equal opportunity to flourish.
- University of North Carolina at Charlotte.

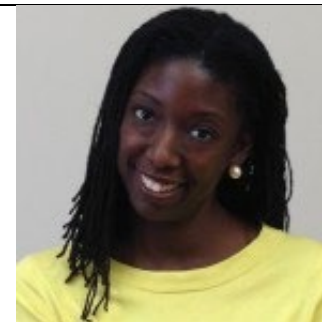


2024 Leadership Conference Bios

Danielle Pulliam

Senior Program Officer, Pinkerton Foundation

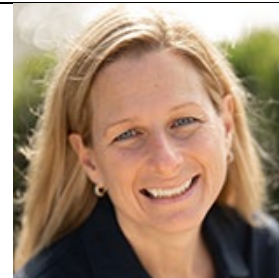
- The Pinkerton Foundation supports community-based programs for children, youth and families in economically disadvantaged areas in New York City. Most of the programs focus on providing opportunities for academic development, career readiness and cultural enrichment.
- Danielle manages grants to literacy, sports and arts programs and serves as a thought partner for the Foundation's Racial Equity Initiative to support BIPOC leaders.
- Previous work includes a role as the Director of Strategic Partnerships in the Office of Adult and Continuing Education at the New York City Department of Education. She also worked with Local Initiative Support Corporation, the United Way and the Stanley Isaacs Neighborhood Center.
- She co-chairs the New York City Youth & Education Funders Working Group and is active in Grantmakers for Education.
- BS, Computer Science & Management, Brown University & MBA, Baruch College (part of the National Urban Fellows Program).



Carrie Quinn, MD

Executive Director, Mount Sinai Parenting Center

- The Mount Sinai Parenting Center aims to transform the way pediatric healthcare is delivered by maximizing opportunities to promote strong parent-child relationships and early childhood development within everyday healthcare interactions.
- Carrie is the Executive Director of the Mount Sinai Parenting Center and an Assistant Clinical Professor in the Department of Pediatrics at the Icahn School of Medicine at Mount Sinai.
- She worked in private practice in Queens for many years prior to joining the Faculty Practice at Mount Sinai. She has also mentored medical students, residents and MD/PhD students in her clinical practice.
- BS, Science-Business, University of Notre Dame (1996) & MD, Tufts University School of Medicine (2001).



Usha Ramachandran, MD

Pediatrician & Associate Professor of Pediatrics, Robert Wood Johnson University Hospital

Medical Director, Reach Out and Read New Jersey

- Usha is a pediatrician and an Associate Professor of Pediatrics at the Robert Wood Johnson University Hospital. She also serves as the Associate Director of the South Asian Total Health Initiative at Rutgers Robert Wood Johnson Medical School.
- She is the Early Childhood Champion for the New Jersey Chapter of the American Academy of Pediatrics and provides clinical care to the most vulnerable children through her clinical work at Eric B. Chandler Health, a federally qualified health center in New Jersey. She is also a member of the Nurture Connection learning collaborative that developed the current training for pediatric care providers on the observation of emotional connection between parents/caregivers and their infants and toddlers.
- MD, University of Madras (India).

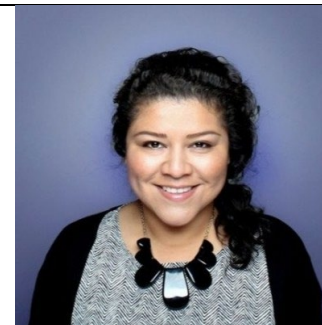


2024 Leadership Conference Bios

Ruby Ramirez

Program Officer, Early Childhood, Oregon Community Foundation

- The Early Childhood Program at the Oregon Community Foundation has made the first five years of a child's life a major focus of its work. Its funded programs support parents in their role as their children's first and most important teachers, provide scholarships to advance the education of early childhood workers, and promote early literacy and language development.
- Ruby's work focuses on grants and initiatives that support the adults who care for young children through early childhood workforce initiatives, parenting education, and policy and advocacy.
- She is a member of the Early Learning Council with the State of Oregon, which helps shape early childhood policy in Oregon with the goal of ensuring a coordinated, unified and aligned system of early learning and care throughout the state. She is also a former member of the Multnomah County Citizen Involvement Committee, Educate Ya (Board Chair), Latino Caucus of the Democratic Party of Oregon, and the Rules Advisory Committee of the Early Childhood Equity Fund at the Oregon Department of Education.
- She previously worked as a policy strategy consultant in Los Angeles and a Policy Fellow at the UCLA Latino Policy and Politics Initiative.
- BA, Marketing, Portland State University (2011); Graduate Certificate in Non-Profit & Public Management, Portland State University (2014); & MSW/MPP, Social Work/Public Policy, UCLA Luskin School of Public Affairs (2018).



Teandra Ramos

Director of Medical Engagement, Reach Out and Read National

- Teandra is the National Director of Medical Engagement for Reach Out and Read. She has been with the organization for nine years and has also worked as a North Carolina Program Specialist and a Director of Medical Engagement for Reach Out and Read Carolinas.
- She is also the Founder of Whole Self Health LLC, a holistic approach to bettering your spiritual, mental, emotional and physical health and well-being, as well as a Consulting Associate in the School of Nursing at Duke University.
- Previously, she was a Practice Administrator at Wake Health Services and a Care Coordinator at Wilson Medical Center.
- BA, Psychology, University of North Carolina at Greensboro (2002) & MSW, California State University, Stanislaus (2004).



Jessica Riggs, PhD

Program Manager, Digital Studies Institute, University of Michigan

- The Digital Studies Institute is a center for research and dialogue where faculty, students and visitors focus their inquiry on technology, digital culture and social justice. Research focuses on the impacts of technology on race, disability, gender, sexuality, class, power and identity.
- Jessica manages DISCO, a new network of researchers, artists, technologists, policymakers and practitioners that challenges digital, social and racial inequalities. Her research interests center on the role of civil society organizations.
- Master's Degrees in Southeast Asian Studies & Public Policy, University of Michigan.



2024 Leadership Conference Bios

Carly Roberts

Associate Program Director, Overdeck Family Foundation

- Carly is the Associate Program Director for Out-of-School Learning at the Overdeck Family Foundation, where she manages the Foundation's grantmaking in early childhood and informal STEM education.
- Before joining the Foundation in 2014, she worked in education, coordinating comprehensive services for children and families in Washington, DC and consulting with school districts, Head Start, Robin Hood Foundation and the Newark Trust for Education.
- BA, Psychology, George Washington University (2008) & MPA/MPH, Columbia University (2014).



Kate Rosenblum, PhD

Professor of Psychiatry & OB/GYN, University of Michigan

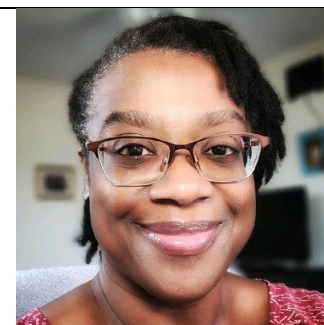
- Kate is a clinical and developmental psychologist and Professor of Psychiatry, OB/Gyn, and Pediatrics at the University of Michigan. She also serves as co-Director of Zero to Thrive, a program that aims to promote the health and well-being of families from conception through early childhood through research, training and education, and service.
- She is a long-time director of both the STRoNG Military Families Program through the M-SPAN Military Support Programs and Networks and the University of Michigan Women and Infants Mental Health Program.
- She is a recipient of the Betty Tableman award for service to Infants and Young Children in Michigan, past president and board member of the Alliance for the Advancement of Infant Mental Health, the psychology consultant for the UM School of Law's Child Advocacy Law Clinic, and director of the Michigan Medicine Infant and Early Childhood Psychiatry Clinic.
- PhD, Clinical and Developmental Psychology, University of Michigan (2000).



Rosalind Ross

Executive Assistant, Reach Out and Read National

- Rosalind is the National Executive Assistant to the CEO at Reach Out and Read. She has worked as an Executive Assistant since 2010 and working for companies including the Medical University of South Carolina, Clear Channel Outdoor, HackerRank and NBobo LLC.
- She volunteers as an Indexer with FamilySearch, a transcription effort that makes valuable genealogical records freely searchable online.
- BFA, Journalism/Public Relations, School of Visual Arts.



2024 Leadership Conference Bios

Jill Ruby

Podcast Producer, Reach Out and Read National

- Jill is a freelance podcast producer specializing in health, news, culture and education.
- In addition to Reach Out and Read, her current freelance clients include Everyday Shakespeare, the University of Wisconsin-Madison, and WUMB Radio 91.9 FM.
- BA, History, Philosophy & Anthropology, University of Toronto (1996) & MA, Broadcast Journalism, S.I. Newhouse School of Public Communications at Syracuse University (1999).



Lee Sanders, MD

Pediatrician & Professor of Pediatrics, Stanford University School of Medicine

- Lee is a general pediatrician and Professor of Pediatrics at the Stanford University School of Medicine, where he is Chief of the Division of General Pediatrics. He holds joint appointments in the Department of Health Policy, Department of Epidemiology and Population Health and the Freeman Spogli Institute for International Studies. He teaches in the Human Biology Program and at the Hasso Plattner Institute of Design at Stanford.
- He is a national expert in the science of health literacy, which applies a literacy lens to advancing maternal and child health equity. He directs the Stanford Health Literacy Lab, which aims to address child disparities in health and education, by redesigning primary care with youth and families.
- He has served as an advisor to the Institute of Medicine, the Centers for Disease Control and Prevention, the Food and Drug Administration, the American Academy of Pediatrics, the Academic Pediatric Association, and the American Cancer Society. He also founded the Greenlight Study Team, a multi-site collaborative that aims to assess the efficacy of low-literacy multi-modal interventions designed to prevent early childhood obesity.
- When he lived in Florida, he was the Medical Director of Reach Out and Read Florida.
- BA, History and Science, Harvard University (1990); MD, Stanford University (1994); & MPH, University of California, Berkeley (2000).



Paige Satterly

Marketing Manager, All About Books

- All About Books is a family-owned business in New York and is one of the leading providers of children's books for literacy programs across the country.
- Paige joined the company in 2019 and is the Marketing Manager. She works on projects including website updates, creating the annual catalog, maintaining all the marketing materials and creating new titles with their publishing company, Chosen Spot Publishing.
- BFA, Visual Media-Photography, Rochester Institute of Technology (2015).



2024 Leadership Conference Bios

Manisha Shah

Director of Early Childhood, The Valhalla Foundation

- The Valhalla Foundation aims to improve rates of academic achievement and attainment nationwide. It focuses on six areas of impact: Early Childhood, K-12 Education, Data Science, Medical Research & Talent, Environmental Innovation, and Collaborative Philanthropy.
- Manisha informs the development of strategy and grant recommendations and manages a portfolio of grantees, providing strategic coaching and thought partnership to accelerate their results.
- She previously served as the Chief Growth Officer at Team4Tech, a nonprofit focused on improving the quality of education for learners in under-resourced communities through technology grants and pro bono consulting. She also worked as the Head of Marketing at Summit Public Schools where she led the national launch and growth of the Summit Learning Program in public schools across the country. Early in her career, she worked at Intel on Education and Social Impact initiatives in multiple marketing and product roles.
- She volunteers as a Mountain View-Los Altos Scholas Board Member and as an AVID High School Mentor Leader. Previously, she served as a board member for the Los Altos Educational Foundation and was involved with local elementary and preschools as a frequent volunteer.
- BS/BA Computer Science & Economics, University of California, Davis (1993) & MBA, Cornell University (1998).



Nikki Shearman

Chief of Research & Innovation, Reach Out and Read National

- Nikki is the Chief of Research and Innovation at Reach Out and Read and is responsible for incorporating its model as a standard of pediatric primary care. She also served as its Director of Communications and Research Strategy for the first two years she was with the organization.
- Previously she was the Executive Director of Nurturing Minds, Inc. and a Program Manager with Understanding our Differences. She has 10 years of experience in medical research in laboratories in the United Kingdom, Japan and Germany and has worked within the management of a variety of non-profits in the United Kingdom and the United States.
- PhD, Immunology/Cancer, University of Southampton UK.



Madison Shepherd

Statewide Program Coordinator, Reach Out and Read Indiana

- Madison is the Program Manager for Reach Out and Read Indiana and has been in this role since 2019.
- She has been working in the nonprofit sector for the past nine years and began her career as the Education Director at the United Way. Many of her efforts were focused on spreading awareness throughout the community regarding the importance of early education, managing programs and strategic initiatives.
- She is passionate about empowering vulnerable children and families to overcome barriers by creating and implementing solutions and awareness.
- BS, Public Health (2015) & MS, Public Management & Public Policy, Indiana University.



2024 Leadership Conference Bios

Amy Shriver, MD

Medical Director, Reach Out and Read Iowa

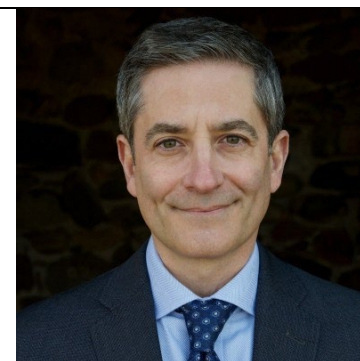
- Amy is a general pediatrician at Blank Children's Hospital and an Assistant Professor of Specialty Medicine at Des Moines University College of Osteopathic Medicine. She is also the Medical Director of Reach Out and Read Iowa. Her research interests include ACES screening and promotion of early literacy and early relational health.
- She is on the Executive Board of the Iowa Chapter of the American Academy of Pediatrics and the Council on Early Childhood. She heads the chapter's mental health committee and is the Iowa Chapter CATCH grant facilitator. In addition, she collaborates across the state with organizations such as Iowa ACES 360, Prevent Child Abuse Iowa, and IAEYC to promote relational health and mitigate the effects of stress on children and families. She is passionate about her role as an Abby's Ambassador, working with the Iowa Alliance for Healthy Kids to educate stakeholders on how to use the fuzzy, friendly resources on Sesame Street in Communities for providers, parents and children.
- BA, Psychology, Northwestern University (1996) & MD, University of Iowa Roy J. and Lucille A. Carver College of Medicine (2004).



Ebben Smith, MD

Chief Medical Officer & Regional VP Anthem BCBS, Elevance Health

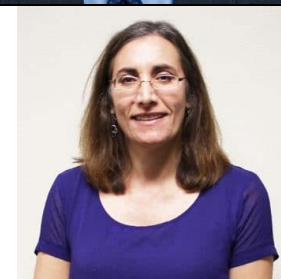
- Elevance Health was formerly known as Anthem, Inc.
- In his role, Ebben oversees the regions of NY, CT, ME & NH.
- He previously spent almost four years as a Managing Director with Deloitte, worked as a Vice President of Provider Solutions and Value-Based Care at Conifer Health Solutions, and spent four years as an Engagement Manager with McKinsey & Company.
- BS, Biology, Penn State University; MD, Icahn School of Medicine at Mount Sinai; & MBA, The Wharton School.



Marsha Spitzer, MD

Medical Director, Reach Out and Read San Diego

- Marsha has been a pediatrician with Family Health Centers of San Diego for the past 22 years and serves as Chief of Pediatrics & Clinical Support at Scripps Mercy Hospital. She is also the Medical Director of Reach Out and Read San Diego.
- She served on the Executive Board of the American Academy of Pediatrics California Chapter 3 and was its President from 2017 to 2019.
- Her husband is also a pediatrician and she practiced for two years in Guam while he was stationed there with the U.S. Navy.
- BS, Physical and Biological Anthropology, Harvard University (1990) & MD, George Washington University School of Medicine & Health Sciences (1996).



2024 Leadership Conference Bios

Jennifer Stavrakos

Program Director of General Learning, William Penn Foundation

- The William Penn Foundation's mission is to help improve education for children from low-income families, ensure a sustainable environment, foster creative communities that enhance civic life and advance philanthropy in the Greater Philadelphia region.
- Jennifer's work focuses on family engagement and advocacy, with responsibility for the Engaged Families portfolio of grants, including projects and initiatives with both local and national partners to ensure Philadelphia families have the resources they need to support their children's education. She also manages the Advocacy & Public Information portfolio, including support of statewide advocacy campaigns related to infant and toddler care, PreK, home visiting and K-12 education.
- Previously, she was Director of Replication and Expansion for Public/Private Ventures working on home visiting and literacy programs both locally and nationally and served as an Officer of the Pew Charitable Trusts, overseeing grantmaking for children, youth and families in the Philadelphia region.
- BA, English & Women's Studies, Colgate University (1994) & MGA, Government Administration, Fels School of Government at the University of Pennsylvania (1997).



Ellen Stevenson, MD, MPH

Pediatrician, Oregon Health & Science University

- Ellen is a Professor of Pediatrics at Oregon Health & Science University and sees pediatric patients at its Doernbecher Pediatrics Clinic in Marquam Hill. She is the former Medical Director of Reach Out & Read Oregon.
- MD, Brown University School of Medicine (1991) & MPH, Harvard School of Public Health (2001).



Melissa Stockwell, MD

Professor of Pediatrics & Population and Family Health, Columbia University

- Melissa has been a member of the staff at Columbia University for the past 17 years. She serves as the Felice K. Shea Professor of Pediatrics and a Professor of Population and Family Health, as well as the Chief of the Division of Child and Adolescent Health and the Director of the Center for Children's Digital Health Research in the Department of Pediatrics. Additionally, she is the Medical Director of the New York-Presbyterian Hospital Immunization Registry, Co-Director of the Columbia University Primary Care Clinical Research Fellowship in Community Health, and a pediatrician in a community clinic.
- Her research concentrates on underserved children and adolescents, focusing on translational interventions to improve vaccinations with an emphasis on health technology and health literacy.
- She is a member of the New York City Department of Health and Mental Hygiene's Immunization Improvement Team and the Associate Director of the American Academy of Pediatrics' Pediatric Research in Office Settings practice-based research network.
- Williams College (1996); MPH, Columbia University Mailman School of Public Health (2007); MD, Harvard Medical School (2000).



2024 Leadership Conference Bios

Tomas Torices, MD

Executive Director, AAP-CA2, Reach Out and Read Inland Empire

- Tomás is the Executive Director for The American Academy of Pediatrics, California Chapter 2, which serves the counties of Kern, Los Angeles, Riverside, San Bernardino, San Luis Obispo, Santa Barbara and Ventura. He also oversees Reach Out and Read Inland Empire for the Counties of Riverside and San Bernardino.
- He is a medical doctor with 10 years of clinical experience, six years as a director of health services in Los Angeles, and eight years as an expert in training, implementation and support of the Emergency Department and Inpatient applications of Epic electronic medical record software. He also has spent the last eight years as an advocate of pediatric policy and implementing training for pediatricians.
- MD, Centro de Estudios Universitarios Xochicalco (1994).



Evilio Torres

President & CEO, Early Learning Coalition of Miami-Dade/Monroe

- The Early Learning Coalition of Miami-Dade/Monroe is dedicated to ensuring high quality early education for children in Miami-Dade and Monroe through a community-based collaborative approach. It administers the state funded Voluntary PreKindergarten and the federally funded School Readiness and Early Head Start programs in partnership with the public school system and early care and education providers.
- Prior to this role, Evilio was the Senior Vice President of Operations for One Hope United and spent 20 years as the Director of Child Welfare and Community-Based Care Program Office for the State of Florida.
- BA, Public Administration, Florida International University (2000) & MPA, Florida International University (2002).



Dan Tuttle

Director of Health, Stupski Foundation

- The Stupski Foundation has announced that it will be spending down its assets and investing all of its funds back into the community by 2029. The Foundation focuses on food, education and health systems, specifically on programs within Early Brain Development, Food Justice, Serious Illness Care and Postsecondary Success. It works with partners who serve Hawaii and the San Francisco Bay Area, especially Alameda and San Francisco Counties.
- Dan began consulting with the Foundation on its strategy in 2016 and joined the staff in 2018. He leads the Foundation's grantmaking team to transform serious illness care and improve early brain development. He has worked with pathbreaking Bay Area partners in the BLOOM (Black Love Opportunity and Outcome Improvement in Medicine) program at UCSF to transform pediatric well-child checks into deeper interactions that support whole family well-being.
- He previously served as a Senior Project Manager at Dalberg Global Advisors, a management consultancy focused on the social sector, and founded Dan's Excel Training, a self-guided program that he ran for almost five years.
- He is a board Member of Dalberg Catalyst, which designs and implements systems solutions that address the interrelated nature of global problems and their root causes.
- BA, University of Arizona (2007) & MBA/MS, Environment and Resources, Stanford University (2012).

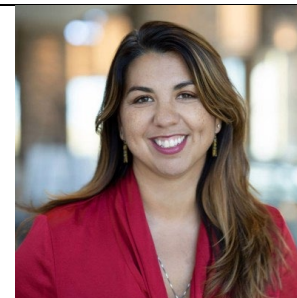


2024 Leadership Conference Bios

Deanna Velazquez-Bills

Director of Consulting Services, Centering Healthcare Institute

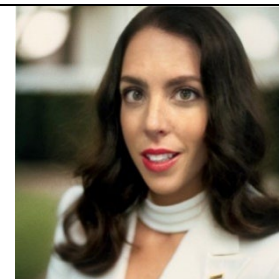
- The Centering Healthcare Institute is working towards a US healthcare system that offers not just medical interventions, but combats isolation and builds communities, empowers and educates patients, and serves as a partner to connect the most vulnerable with resources that contribute to overall health. It is driven to create a future where the risk of preterm birth, the inequities of Black women dying from pregnancy related causes and the disparities in early childhood are greatly reduced – so that every child has the potential to enjoy future life changes, social and economic opportunities and overall well-being.
- In this role, Deanna serves as an expert in the clinical implementation of the Centering model and manages a team of consultants. She also manages initiatives and collaborations with healthcare providers, public health advocates and organizations to improve maternal health.
- She has more than a decade of experience as a Doula, Certified Lactation Counselor, Childbirth Educator and reproductive activist, and has taught mindfulness and yoga for more than 20 years. Previously, she worked for Planned Parenthood South Atlantic and Austin Area Birthing Center.
- AA, Liberal Arts, Brookdale Community College; BA, Spanish & International Trade, Clemson University; & MBA, International Business/Trade/Commerce, Copenhagen Business School.



J'Amy Viers

Program Director, Reach Out and Read Orange County

- J'Amy is the Program Director of the American Academy of Pediatrics, Orange County. She previously was a Senior Social Worker for the Orange County Social Services Agency and has also worked for a wide variety of organizations throughout her career.
- BS, Sociology, Lee University (2008).



Clare Viglione

GROWBABY Practice-Based Research Network Director, Vital Villages

- Vital Villages is a network of residents and organizations committed to maximizing child, family and community well-being. Its community engagement network mobilizes collective investment from residents, community organizations and institutions to seed scalable and sustainable community change around child protection and promoting healthy social and emotional development in early childhood.
- Clare's prior roles include working in the Population and Family Health Department at Columbia on the Getting Ready for School project and on SKIP!, the toddler physical activity intervention in Early Head Start. She has held research positions with the Harvard Prevention Research Center, Boston Medical Center and New York University in addition to health education roles with Harlem Children's Zone and the New York City Department of Health.
- She has also completed a Dietetic Internship at Harvard Medical School/Brigham and Women's Hospital to become a Registered Dietitian and has practiced primary care clinical nutrition focused on diabetes and women's health.
- She volunteers at The Dinner Party Project with Spoons Across America, as a Farmer's Market Assistant at City Harvest, and as a Childcare Attendant with Rady Children's Hospital in San Diego.



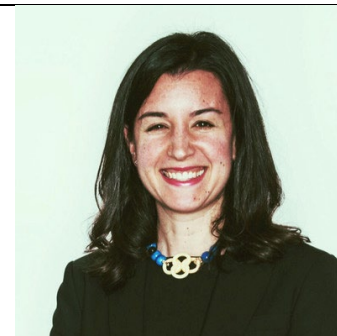
2024 Leadership Conference Bios

- BA, Psychology, Southern Methodist University (2011); MPH, Columbia University (2015); and PhD candidate, Public Health, San Diego State University & UC San Diego (anticipated 2025). Post-graduate plans include developing equitable, cost-effective familial interventions targeting social-emotional development and childhood obesity.

Lauren Wechsler

Program Director, Philadelphia Health Partnership

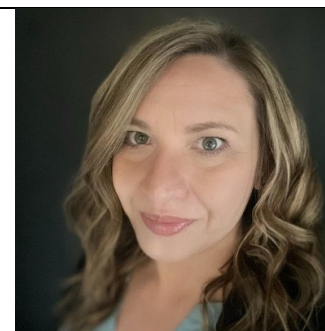
- Philadelphia Health Partnership is a foundation advocating for and resourcing equitable, quality care and services that improve the health and well-being of people in Philadelphia.
- Lauren served as the Program Director for almost seven years, designing and implementing foundation strategic initiatives to advance health equity and early childhood health and development.
- Her prior roles have included working as a Senior Program Analyst of Community Change for the Center for the Study of Social Policy, as a Senior Associate of the Economic Mobility Project for The Pew Charitable Trusts, and Coordinator of the Haas Center for Public Service at Stanford University.
- BA, History, Stanford University (2004) & MPP, Public Policy, Harvard Kennedy School (2010).



Jennifer Weesner

National Partnership Manager, CareSource

- CareSource is a healthcare coverage company. The CareSource Foundation funds nonprofits that are working to eliminate poverty, provide much-needed services to low- and moderate-income families, encourage healthy communities, develop innovative approaches to address critical health issues, and enhance the lives of a diverse array of children, adults and families.
- Jennifer partners with national grantees to work on funding projects together.
- She previously has done some consulting and marketing work for Dahl Consulting, Healthy Blue Nebraska, and WellCare Health Plans. She also worked for almost 11 years as a care worker, mental health technician and domestic abuse group facilitator.
- BA, Human Relations, Doane University (2015).



Atiya Weiss

Executive Director, The Burke Foundation

- The Burke Foundation invests in transformative early childhood initiatives to build a cycle of opportunity across generations in New Jersey.
- Atiya leads the Burke Foundation's efforts to invest in the most promising and transformative programs and policies that foster the health, well-being, and resilience of children and families in New Jersey.
- She previously was the Executive Director at JP Morgan's Philanthropy Center advising charitable trusts and family foundations for five years.
- She is interested in breaking silos and building coalitions, centered around community voices, to make systems change and build a cycle of opportunity across generations. She is passionate about collaborating with leaders across sectors to tackle the social problems facing underserved children and their families, and firmly believes that effective partnerships can unlock the potential of communities and create meaningful, lasting change.



2024 Leadership Conference Bios

- Trustee of the Council of New Jersey Grantmakers.
- BA, Biology and Public Policy, Brown University (2001) & MPH, Epidemiology, Columbia University.

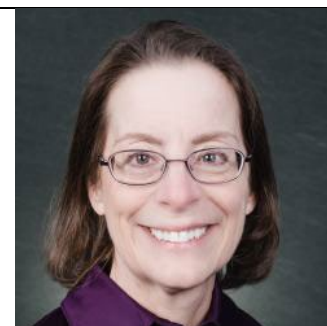
Miriam Westheimer ***Chief Program Officer, HIPPY International***

- HIPPY International stands for Home Instruction for Parents and Preschool Youngsters. It's dedicated to the principles of equal educational opportunity and social inclusion, working with communities and families worldwide who face socio-economic challenges, and helping parents and caregivers nurture children's readiness for school and their motivation to reach their highest potential.
- Miriam has worked in the fields of education, social service and nonprofit management and has spent the last 20 years working with HIPPY, first in the United States as the founding executive director and later building the international network of HIPPY programs among the 10 participating countries.
- She co-authored the best-selling international textbook and multi-media series, Focus on Grammar, and helped conceive and create a global course to teach teenagers and adults to how to communicate effectively in English. She has also taught courses from elementary to graduate levels and works with various consulting clients.
- BS, Political Science & Sociology, Barnard College (1978); MEd, Teachers College at Columbia University (1978); & EdD, Educational Leadership & Curriculum Development, Teachers College at Columbia University (1989).



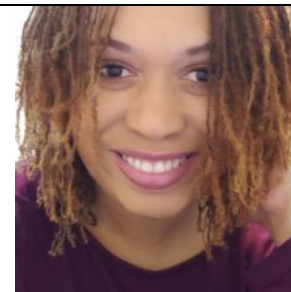
Cathy Wiley, MD ***Division Head of Primary Care at Connecticut Children's Medical Center*** ***Medical Advisor, Reach Out and Read***

- Cathy is the Division Head of Primary Care at Connecticut Children's Medical Center and Associate Professor of Pediatrics at the University of Connecticut School of Medicine. She directs patient care and medical education for the Connecticut Children's Primary Care Centers in three locations.
- Her special interests include early childhood literacy, developmental screening, immunizations and medical education.
- She previously practiced general pediatrics at the Children's Hospital of Philadelphia before returning to her native Connecticut when the children's hospital opened in 1996.
- She founded Reach Out and Read Connecticut.
- MD, Duke University School of Medicine.



Azure'De "DeDe" Williams ***Executive Director, Reach Out and Read Wisconsin***

- DeDe is the Executive Director of Reach Out and Read Wisconsin. She has more than 25 years of experience working in the nonprofit sector within two areas she felt most impacted quality of life - Health and Education. She uses her skills in program development, civic engagement and program evaluation to support efforts in addressing health disparities and achievement gaps.
- She previously was the Executive Director for the Milwaukee Area Health Education Center and has worked with Planned Parenthood of Wisconsin, the YMCA of Metropolitan Milwaukee, the University of Wisconsin-Milwaukee, and Rosalie Manor.



- BS, Behavioral Science & Law, University of Wisconsin-Madison (1997).

J. Corey Williams, MD

Director of Mental Health Services, Early Childhood Innovation Network

- The Early Childhood Innovation Network (ECIN) works to create innovative partnerships to strengthen child and family well-being in the nation's capital. It is a joint effort between several institutions and organizations: Georgetown University Hospital, Children's National Health System, Children's Law Center, George Washington University, Georgetown University Center for Child and Human Development, Health Alliance Network, Johns Hopkins Bloomberg School of Public Health, Parent Watch and Total Family Care Coalition.
- Corey is the Director of Mental Health Services at ECIN, where he conducts community-based participatory research focused on early childhood development. He is also an Assistant Professor in the Department of Psychiatry at Medstar-Georgetown University Hospital and is a child and adolescent psychiatrist with the Wellness in School Environments program, where he helps deliver school-based mental health services for children and families. Finally, he is the Co-Director of Recruitment, Retention, and Development at Medstar-Georgetown Department of Psychiatry.
- He is a former Washington, DC public school teacher and is currently the Co-Chair of the National Anti-Racism in Medicine Curriculum Coalition.
- MD, The Johns Hopkins University.



Hope Williams-Burt

Family Leader & Community Partnership Consultant, Oakland BLOOM Clinic

- Hope has four children and is a participant in UCSF Benioff Children's Hospital Oakland's new initiative, BLOOM: Black Love Opportunity & Outcome Improvement in Medicine Primary Care. The new clinic matches Black babies, newborn to three years old, with a health care team who share their racial identities and understand the social, cultural and racial challenges that Black families face.
- She started with the UCSF Preterm Birth Initiative in 2014 when it was still a focus group at the Homeless Prenatal Program. She has worked for more than 20 years educating, advocating and strengthening family and community voices in San Francisco.
- As a member of the PTBi-CA Community Advisory Board, she serves as a mentor to new community leaders and researchers and strives to educate and support mothers facing similar challenges. In addition to her service on the board, she serves on district and city forums that address housing, education, resources, policies and programs in San Francisco.



David Willis, MD

Senior Fellow, Center for the Study on Social Policy

- The Center for the Study on Social Policy works to achieve a racially, economically and socially just society in which all children, youth and families thrive.
- David engages with partners to launch new work focused on Early Relational Health, helping to further define this growing body of knowledge and its use and application in pediatric care and broader early childhood systems.
- Previously, he was the Executive Director of the Perigee Fund, where his work was focused on the promotion of early relational health, the strengthening of the social and emotional development, and advancing the field of Infant Mental



2024 Leadership Conference Bios

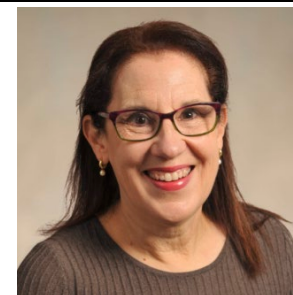
Health. He is a developmental-behavioral pediatrician and was a clinician in Oregon for more than 30 years with a practice focused on early childhood development and family therapy.

- Prior to this role, he was the Division Director of Home Visiting and Early Childhood systems, HRSA, as well as the Founder and Medical Director of Artz Center for Developmental Health.
- David is a director of Child First, past president of the Oregon Pediatric Society, an executive member of the American Academy of Pediatrics' Section on Early Education and Childcare, and Chair of the AAP Board's Early Brain and Child Development Strategic Initiative.
- MD, Thomas Jefferson University.

Mary Ann Woodruff, MD

Medical Director, Reach Out and Read Washington

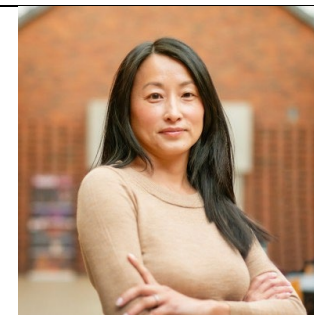
- Mary Ann is a pediatrician with Pediatrics Northwest PS, where she serves as the physician champion for behavioral health integration. She is passionate about developing systems that provide families with the right resources at the right time. She has been the Medical Director of Reach Out and Read Washington since 2007 and serves as a Medical Advisor for Reach Out and Read National.
- Her medical training took place at Mount Zion Hospital in San Francisco and Stanford University Medical Center in Palo Alto.
- She has served on the board of the Pierce County Library Foundation and the Children's Museum of Tacoma.
- MD, University of Washington School of Medicine.



Pahoua Yang Hoffman

SVP of Community & Government Relations, Health Partners

- Health Partners is one of Minnesota's largest nonprofit health care providers and insurance companies.
- Pahoua serves as chief strategist for grantmaking and community impact, specifically managing relationships with the F.R. Bigelow Foundation and Mardag Foundation. She also assists the Foundation in the areas of public policy and community engagement and advises the CEO on statewide strategic leadership.
- She was previously the executive director of the Citizens League and was the first woman and the first person of color to hold the position since its founding in 1952.
- Her board service includes Catholic Charities of St. Paul and Minneapolis, the Minneapolis Parks Foundation, the Constellation Fund, Girl Friday Theatre Productions, and the College of Arts & Sciences at the University of St. Thomas.
- BA, History, University of Minnesota-Twin Cities & MBA, University of St. Thomas (2006). Also participated as a Policy Fellow at the Humphrey School of Public Affairs and in the Young American Leadership Program at Harvard Business School.



2024 Leadership Conference Bios

Rong Yi, PhD

Principal of Data Science Modeling Practice, Milliman

- Milliman is a 75-year-old company that works with organizations on issues such as retirement funding, healthcare financing, risk management, regulatory compliance, data analytics and business transformation.
- Rong leads Milliman's Data Science Modeling Practice and focuses on analytics, big data, data science tools, methodologies, strategies and operations for payers, providers and other healthcare stakeholder entities. She joined the firm in 2009 and has also served as an ad hoc grant reviewer for the Federal Agency for Healthcare Research and Quality.
- She is an adjunct professor at Peking University's Institute for Global Health and Development, is a frequent speaker at industry conferences, and has published numerous articles on a wide range of healthcare topics.
- BS, Peking University & PhD, Economics, Boston University.

